

9212 OLYMPIC BOULEVARD

BEVERLY HILLS GROUND FLOOR RETAIL



JAY LUCHS

Vice Chairman

310-407-6585

jay.luchs@nrmk.com

CA RE Lic. #01260345

JAYLUCHS.COM

CARLY GELLER

Associate Director

310-593-0760

carly.geller@nrmk.com

CA RE Lic. #02153582

NEWMARK



9212 OLYMPIC BOULEVARD

ADDRESS

9212 Olympic Boulevard
Beverly Hills, CA 90212

USE

Retail

SIZE

Ground Floor

Space A: ±1,272 RSF

Space B:* ±5,590 RSF

Courtyard: ±1,315 SF

*Divisible

RENT

Available upon Request

AVAILABLE

Immediately

PARKING

1 space per 300 SF

CEILING HEIGHTS

12'-13' ceilings

JAY LUCHS

Vice Chairman

310-407-6585

jay.luchs@nrmk.com

CA RE Lic. #01260345

JAYLUCHS.COM

CARLY GELLER

Associate Director

310-593-0760

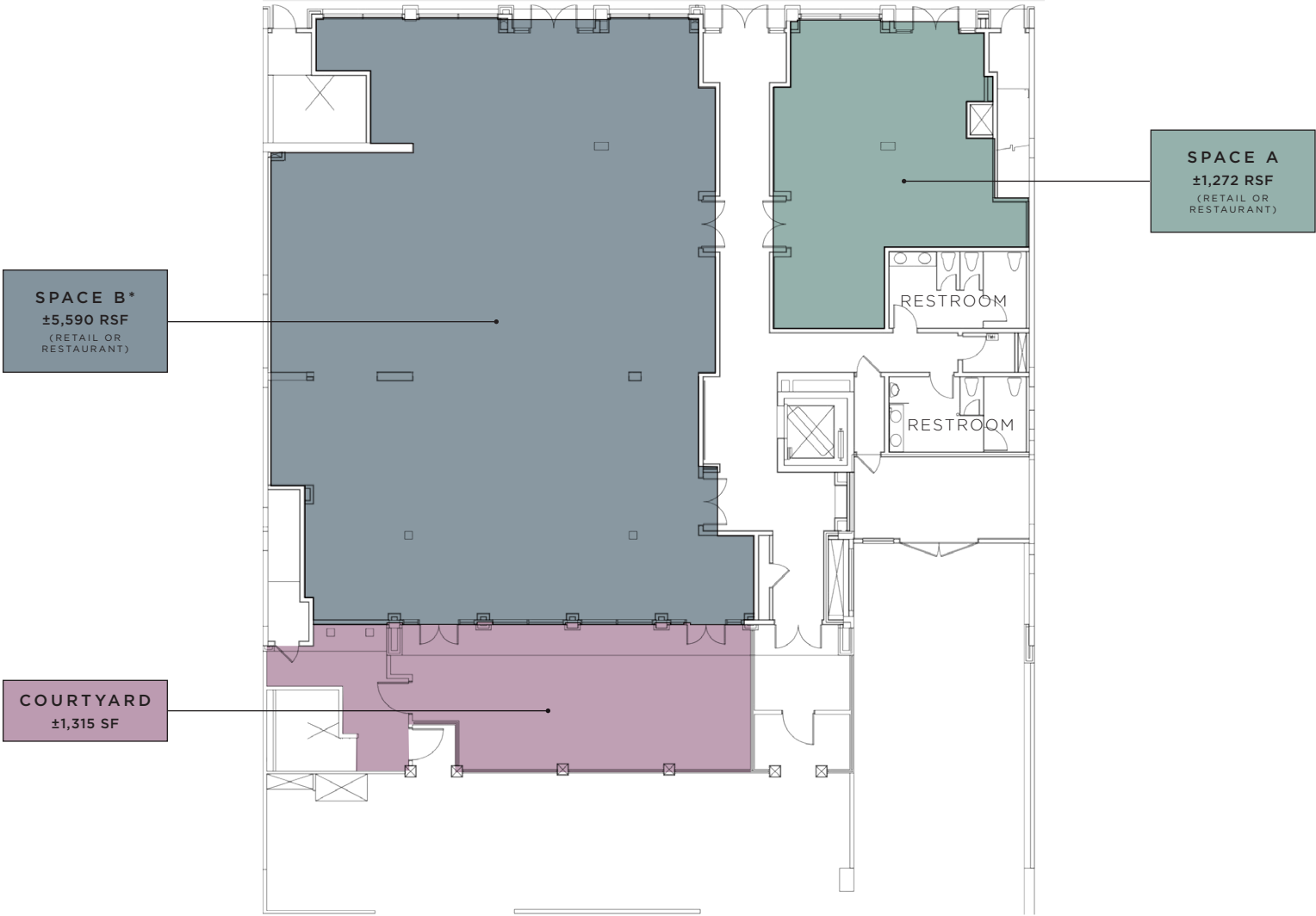
carly.geller@nrmk.com

CA RE Lic. #02153582

NEWMARK

FLOOR PLAN
GROUND FLOOR

W OLYMPIC BLVD



*DIVISIBLE

JAY LUCHS
CARLY GELLER

Vice Chairman
Associate Director

310-407-6585
310-593-0760

jay.luchs@nrmk.com
carly.geller@nrmk.com

CA RE Lic. #01260345
CA RE Lic. #02153582

JAYLUCHS.COM
NEWMARK

RENDERINGS
LOADING ZONE



The information contained herein has been obtained from sources deemed reliable but has not been verified and no guarantee, warranty or representation, either express or implied, is made with respect to such information. Terms of sale or lease and availability are subject to change or withdrawal without notice.

Corporate RE Lic.#01355491

JAY LUCHS

Vice Chairman

310-407-6585

jay.luchs@nrmk.com

CA RE Lic. #01260345

JAYLUCHS.COM

CARLY GELLER

Associate Director

310-593-0760

carly.geller@nrmk.com

CA RE Lic. #02153582

NEWMARK