

9952 S. Santa Monica Boulevard Beverly Hills, CA 90212



*Digitally altered image

Boutique Office/Retail Showroom Space Available Beverly Hills | Century City Adjacent

JAY LUCHS

Executive Vice Chairman

310-407-6585

jay.luchs@nmrk.com

CA RE Lic. #01260345

CARLY GELLER

Director

310-593-0760

carly.geller@nmrk.com

CA RE Lic. #02153582

NEWMARK
PACIFIC

JAYLUCHS.COM

jayluchs.com

For Lease
310 407 6585

Jay Luchs
Los Angeles

Address

9952 S. Santa Monica Boulevard
Beverly Hills, CA 90212

Use

Office/Retail Showroom

Size

First Floor: ±3,472 SF

Rent

Available upon Request

Parking

Two spaces on site in rear and additional parking in surface lot



JAY LUCHS
CARLY GELLER
NEWMARK
PACIFIC

Executive Vice Chairman
Director
JAYLUCHS.COM

310-407-6585
310-593-0760

jay.luchs@nmrk.com
carly.geller@nmrk.com

CA RE Lic. #01260345
CA RE Lic. #02153582

jayluchs.com
For Lease
310 407 6585
Jay Luchs
Los Angeles

Highlights

- Boutique two-story Beverly Hills office/retail showroom located on S. Santa Monica Boulevard at the crossroads of Beverly Hills and Century City
- High-end finishes and display shelving ideal for showrooms
- Executive office with a private restroom
- Includes five offices total, three window lined offices, two interior offices, conference room/kitchen area, three restrooms, reception area, open work space, and storage
- Within blocks of Century City mall, new One Beverly Hills development, the Golden Triangle, and a variety of food and beverage options
- Easily accessible from all major freeways
- Surrounded by Fortune 500 companies, entertainment firms, boutique businesses, art galleries, and medical practices
- Two parking spots in the rear and additional parking in surface lot across the street available



JAY LUCHS
CARLY GELLER
NEWMARK
PACIFIC

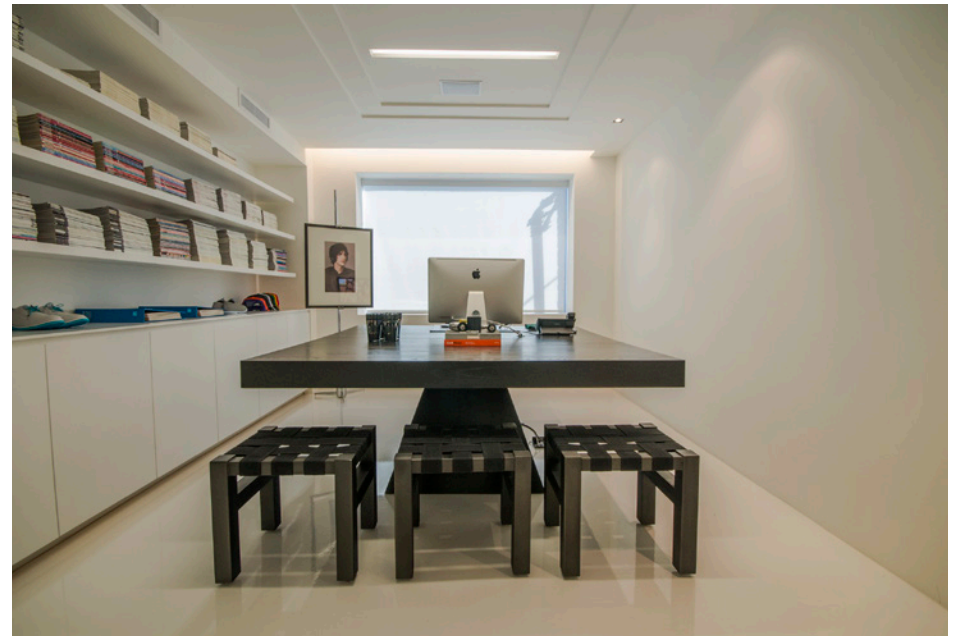
Executive Vice Chairman
Director
JAYLUCHS.COM

310-407-6585
310-593-0760

jay.luchs@nrmk.com
carly.geller@nrmk.com

CA RE Lic. #01260345
CA RE Lic. #02153582

jayluchs.com
For Lease
310 407 6585
Jay Luchs
Los Angeles



JAY LUCHS
CARLY GELLER
NEWMARK
PACIFIC

Executive Vice Chairman
Director
JAYLUCHS.COM

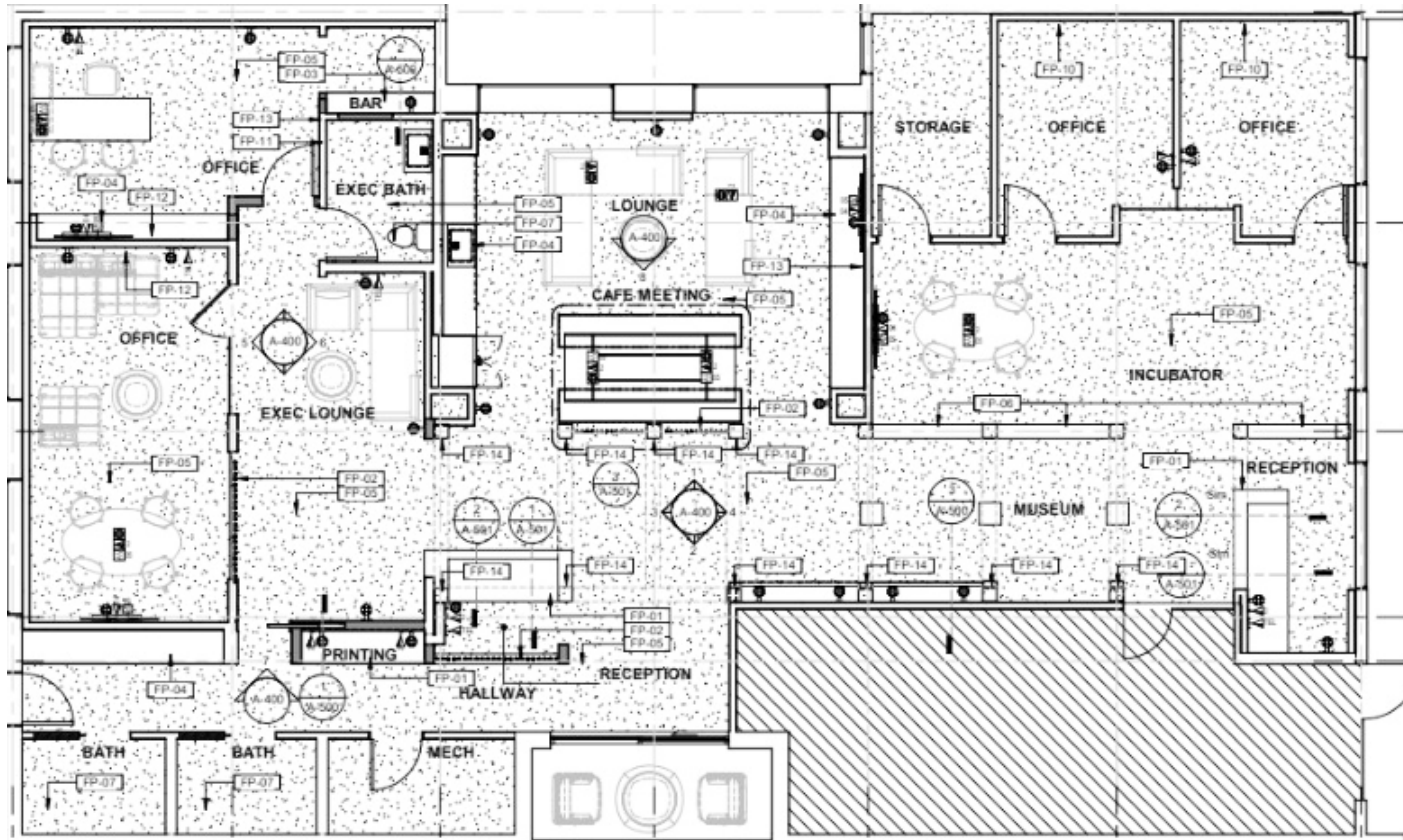
310-407-6585
310-593-0760

jay.luchs@nrmk.com
carly.geller@nrmk.com

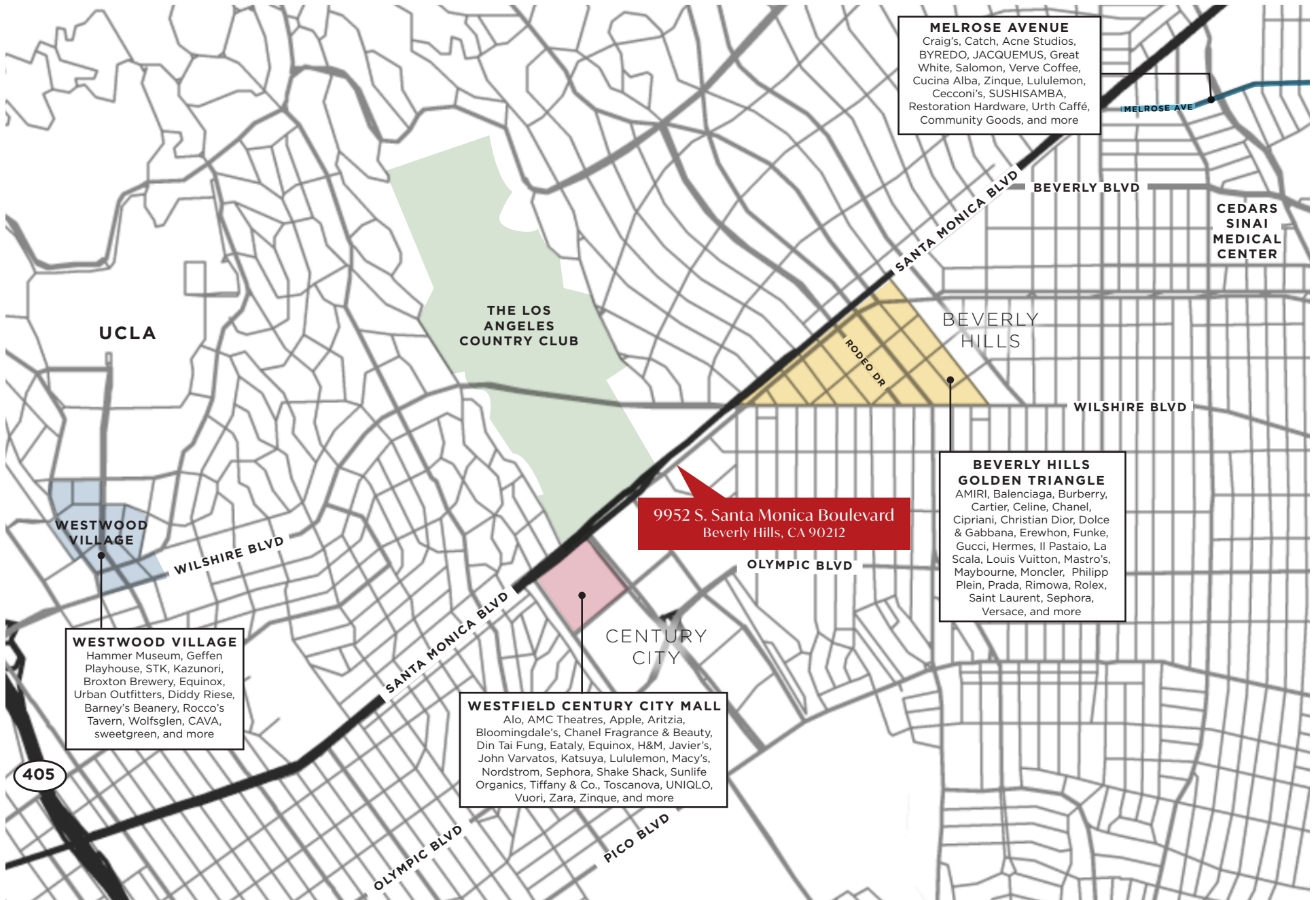
CA RE Lic. #01260345
CA RE Lic. #02153582

jayluchs.com
For Lease
310 407 6585
Jay Luchs
Los Angeles

First Floor Floor Plan



S. Santa Monica Boulevard



JAY LUCHS
CARLY GELLER
NEWMARK
 PACIFIC

Executive Vice Chairman
 Director
JAYLUCHS.COM

310-407-6585
 310-593-0760

jay.luchs@nrmk.com
 carly.geller@nrmk.com

CA RE Lic. #01260345
 CA RE Lic. #02153582

jayluchs.com
For Lease
310 407 6585
Jay Luchs
 Los Angeles



9952 S. Santa Monica Boulevard Beverly Hills, CA 90212

The information contained herein has been obtained from sources deemed reliable but has not been verified and no guarantee, warranty or representation, either express or implied, is made with respect to such information. Terms of sale or lease and availability are subject to change or withdrawal without notice.

*Digitally altered images, view original photos [here](#)

JAY LUCHS

Executive Vice Chairman

310-407-6585

jay.luchs@nmrk.com

CA RE Lic. #01260345

CARLY GELLER

Director

310-593-0760

carly.geller@nmrk.com

CA RE Lic. #02153582

NEWMARK
PACIFIC

JAYLUCHS.COM

Corporate RE License #01796698

jayluchs.com
For Lease
310 407 6585
Jay Luchs
Los Angeles