

# 9952 S. Santa Monica Boulevard Beverly Hills, CA 90212



\*Digitally altered image

## Boutique Office/Retail Showroom Space Available Beverly Hills | Century City Adjacent

**JAY LUCHS**

**CARLY GELLER**

**NEWMARK**  
PACIFIC

Executive Vice Chairman

Director

**JAYLUCHS.COM**

310-407-6585

310-593-0760

[jay.luchs@nmrk.com](mailto:jay.luchs@nmrk.com)

[carly.geller@nmrk.com](mailto:carly.geller@nmrk.com)

CA RE Lic. #01260345

CA RE Lic. #02153582

jayluchs.com  
**For Lease**  
**310 407 6585**

**Jay Luchs**  
Los Angeles

## Address

9952 S. Santa Monica Boulevard  
Beverly Hills, CA 90212

## Use

Office/Retail Showroom

## Size

First Floor: ±3,472 SF

## Rent

Available upon Request

## Parking

Two spaces on site in rear and additional parking in surface lot



**JAY LUCHS**  
**CARLY GELLER**  
**NEWMARK**  
PACIFIC

Executive Vice Chairman  
Director  
**JAYLUCHS.COM**

310-407-6585  
310-593-0760

jay.luchs@nrmk.com  
carly.geller@nrmk.com

CA RE Lic. #01260345  
CA RE Lic. #02153582

jayluchs.com  
**For Lease**  
**310 407 6585**  
**Jay Luchs**  
Los Angeles

## Highlights

- Boutique two-story Beverly Hills office/retail showroom located on S. Santa Monica Boulevard at the crossroads of Beverly Hills and Century City
- High-end finishes and display shelving ideal for showrooms
- Executive office with a private restroom
- Includes five offices total, three window lined offices, two interior offices, conference room/kitchen area, three restrooms, reception area, open work space, and storage
- Adjacent to Nerano Restaurant and within a short walk of The Peninsula Beverly Hills, the Waldorf Astoria Beverly Hills, and multiple Starbucks locations
- Within blocks of Century City mall, new One Beverly Hills development, the Golden Triangle, and a variety of food and beverage options
- Easily accessible from all major freeways
- Surrounded by Fortune 500 companies, entertainment firms, boutique businesses, art galleries, and medical practices
- Two parking spots in the rear and additional parking in surface lot across the street available



**JAY LUCHS**  
**CARLY GELLER**  
**NEWMARK**  
PACIFIC

Executive Vice Chairman  
Director  
**JAYLUCHS.COM**

310-407-6585  
310-593-0760

jay.luchs@nrmk.com  
carly.geller@nrmk.com

CA RE Lic. #01260345  
CA RE Lic. #02153582

jayluchs.com  
**For Lease**  
**310 407 6585**  
**Jay Luchs**  
Los Angeles



**JAY LUCHS**  
**CARLY GELLER**  
**NEWMARK**  
PACIFIC

Executive Vice Chairman  
Director  
**JAYLUCHS.COM**

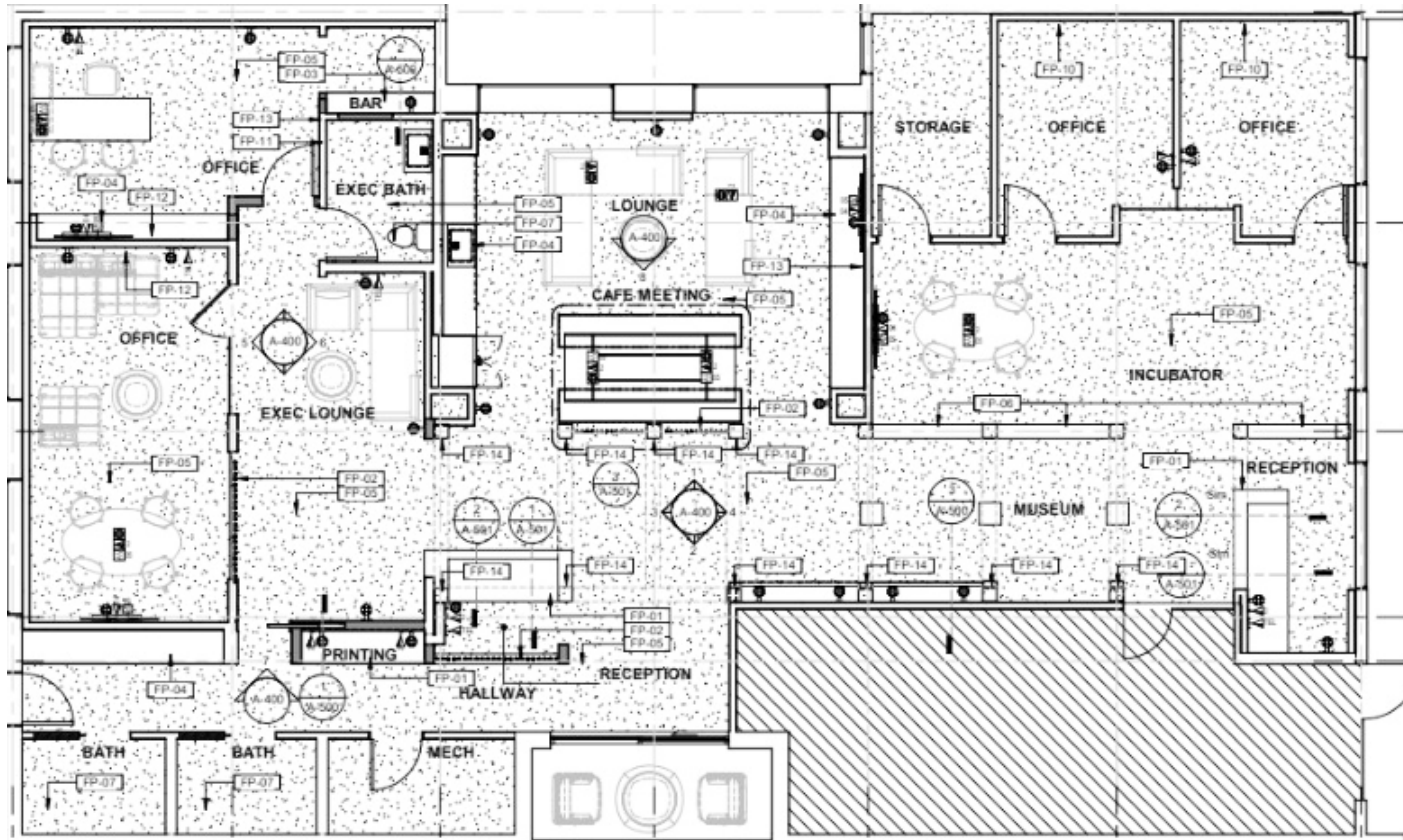
310-407-6585  
310-593-0760

[jay.luchs@nrmk.com](mailto:jay.luchs@nrmk.com)  
[carly.geller@nrmk.com](mailto:carly.geller@nrmk.com)

CA RE Lic. #01260345  
CA RE Lic. #02153582

jayluchs.com  
**For Lease**  
**310 407 6585**  
**Jay Luchs**  
Los Angeles

# First Floor Floor Plan



S. Santa Monica Boulevard





# 9952 S. Santa Monica Boulevard Beverly Hills, CA 90212

The information contained herein has been obtained from sources deemed reliable but has not been verified and no guarantee, warranty or representation, either express or implied, is made with respect to such information. Terms of sale or lease and availability are subject to change or withdrawal without notice.

\*Digitally altered images, view original photos [here](#)

**JAY LUCHS**

Executive Vice Chairman

310-407-6585

[jay.luchs@nmrk.com](mailto:jay.luchs@nmrk.com)

CA RE Lic. #01260345

**CARLY GELLER**

Director

310-593-0760

[carly.geller@nmrk.com](mailto:carly.geller@nmrk.com)

CA RE Lic. #02153582

**NEWMARK**  
PACIFIC

[JAYLUCHS.COM](http://JAYLUCHS.COM)

Corporate RE License #01796698

jayluchs.com  
**For Lease**  
**310 407 6585**  
**Jay Luchs**  
Los Angeles