



# BEVERLY CONNECTION

RETAIL SPACES AVAILABLE FOR LEASE

## JAY LUCHS GROUP

**JAY LUCHS**  
Executive Vice Chairman  
T 310-407-6585  
jay.luchs@nrmk.com  
CA RE Lic. #01260345

**CARLY GELLER**  
Director  
T 310-593-0760  
carly.geller@nrmk.com  
CA RE Lic. #02153582

**JAYLUCHS.COM**  
CORPORATE RE LICENSE #01796698

**NEWMARK**  
PACIFIC

# OVERVIEW

## ADDRESS

100 N. La Cienega Boulevard  
Los Angeles, CA 90048

## USE

Retail/Food & Beverage

## RENT

Available upon Request

## PARKING

100 surface spaces  
600 covered spaces

## SIZE

**BUILDING B** (Formerly Chase, Currently Corner Bakery, Formerly Verizon)

Suite	Level	Size
B111-114	Level 1	±9,130 SF
B231-B233	Level 2	±8,279 SF
<b>Total</b>		<b>±17,409 SF</b>

**BUILDING C** (Formerly Saks Off Fifth)

Suite	Level	Size
C120	Level 1	±9,177 SF
C240	Level 2	±17,876 SF
<b>Total</b>		<b>±27,053 SF</b>

**BUILDING D** (Formerly Ross)

Suite	Level	Size
D201 (Loading area)	Level 1	±996 SF
D201	Level 2	±29,085 SF
<b>Total</b>		<b>±30,081 SF</b>



# BUILDING B



# FLOOR PLAN

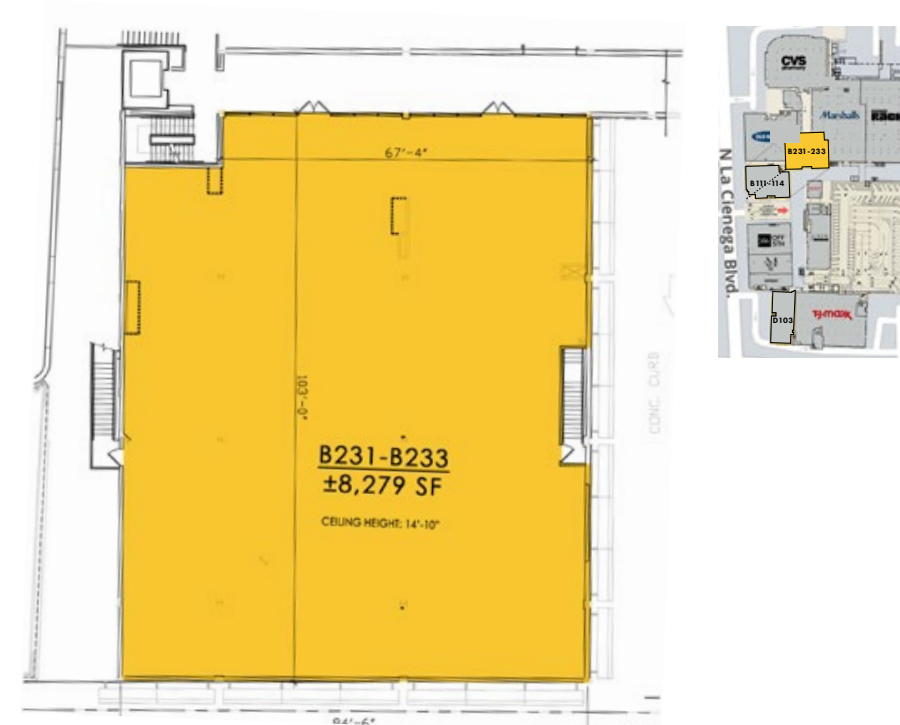
**B111-114**  
BUILDING B  
LEVEL 1  
±9,130 SF

**B231-233**  
BUILDING B  
LEVEL 2  
±8,279 SF

## LEVEL 1



## LEVEL 2



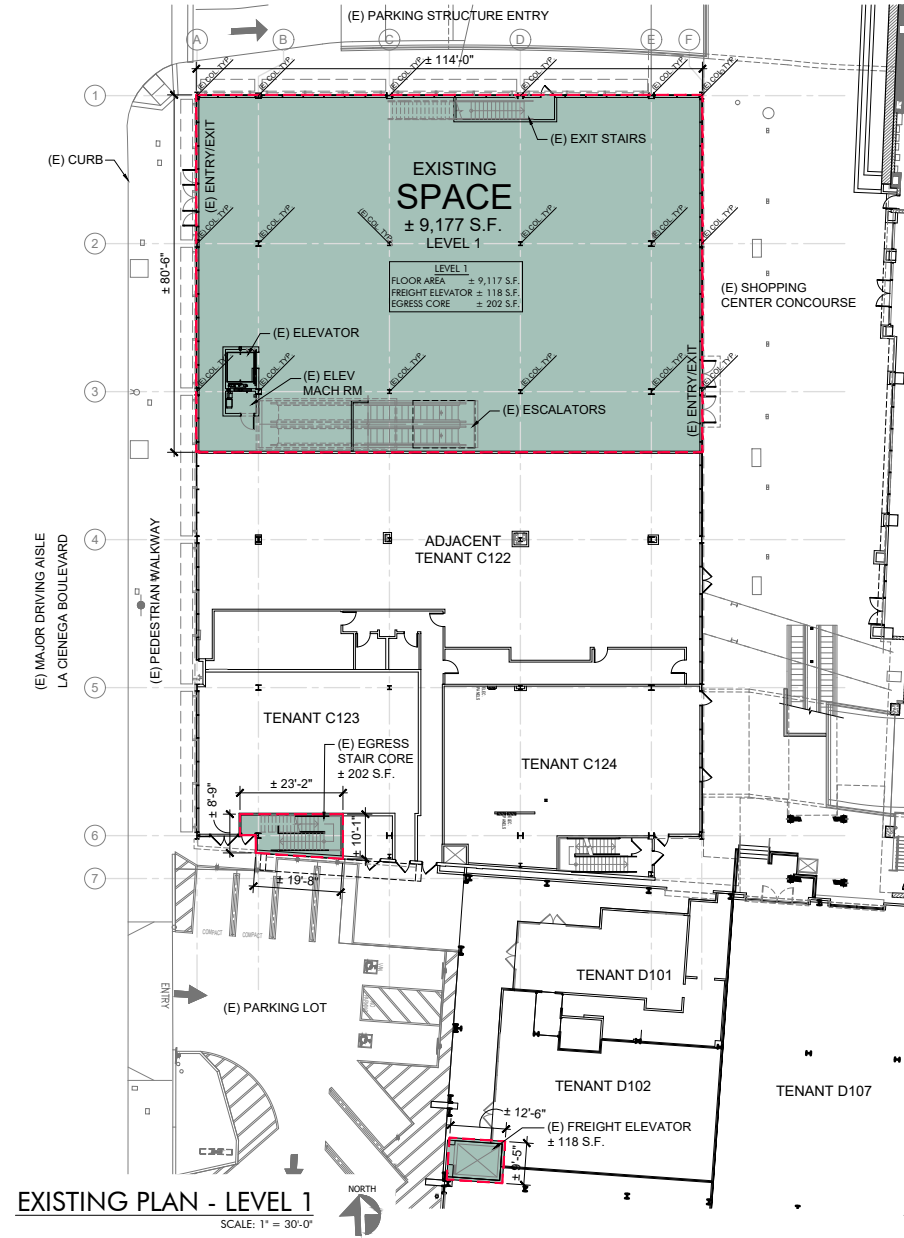
# BUILDING C



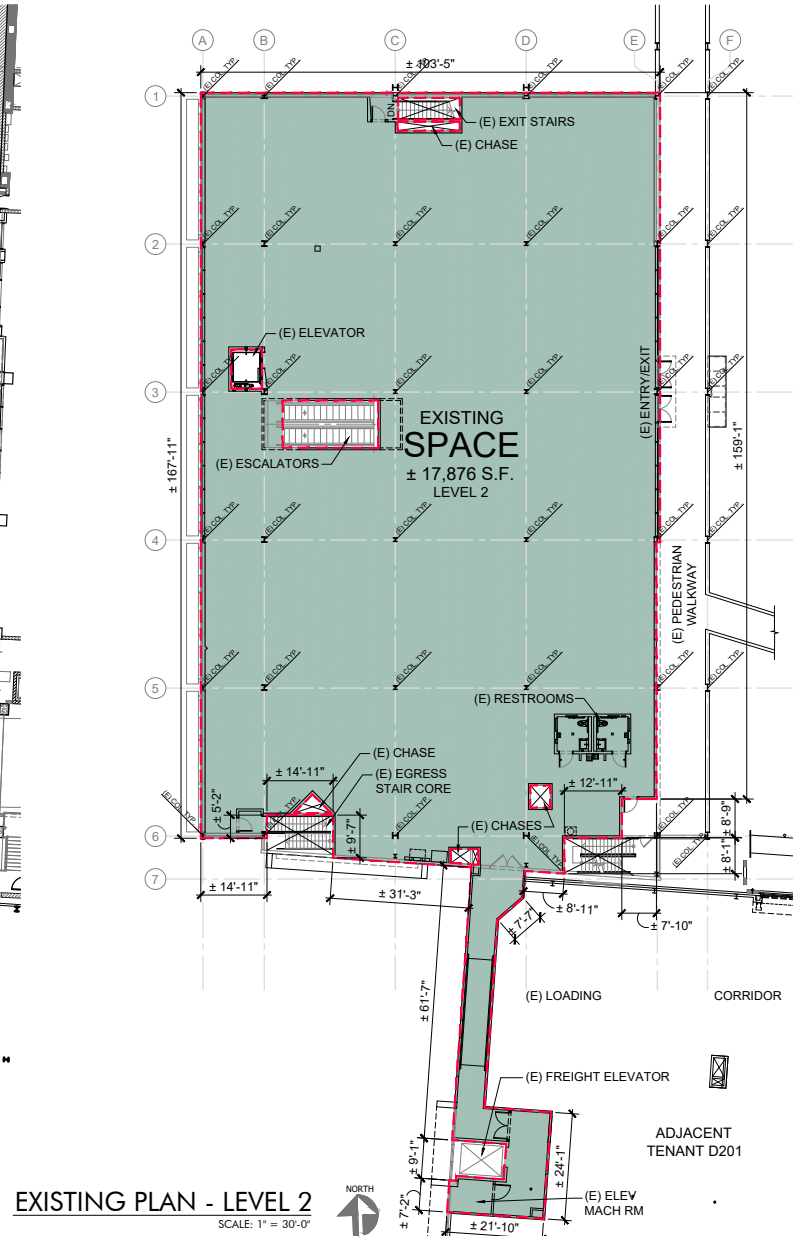
# FLOOR PLAN

**C120**  
**BUILDING C**  
**LEVEL 1**  
**±9,177 SF**

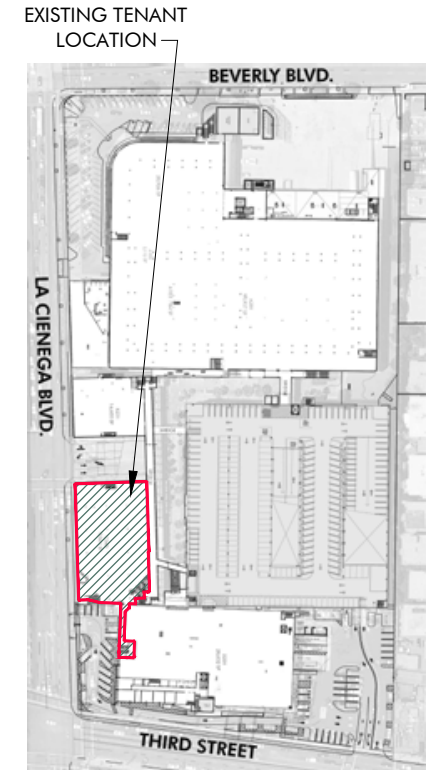
**C240**  
**BUILDING C**  
**LEVEL 2**  
**±17,876 SF**



EXISTING PLAN - LEVEL 1  
 SCALE: 1" = 30'-0"



EXISTING PLAN - LEVEL 2  
 SCALE: 1" = 30'-0"



EXISTING TENANT LOCATION  
 SECOND LEVEL LEASE PLAN  
 NOT TO SCALE  
 NORTH

AREA CALCULATIONS:

LEVEL 1	
FLOOR AREA	± 9,117 S.F.
FREIGHT ELEVATOR	± 118 S.F.
EGRESS STAIR CORE	± 202 S.F.
<b>LEVEL 1 TOTAL S.F.</b>	<b>± 9,437 S.F.</b>
LEVEL 2	
FLOOR AREA	± 17,876 S.F.
<b>TOTAL S.F.</b>	<b>± 27,313 S.F.</b>

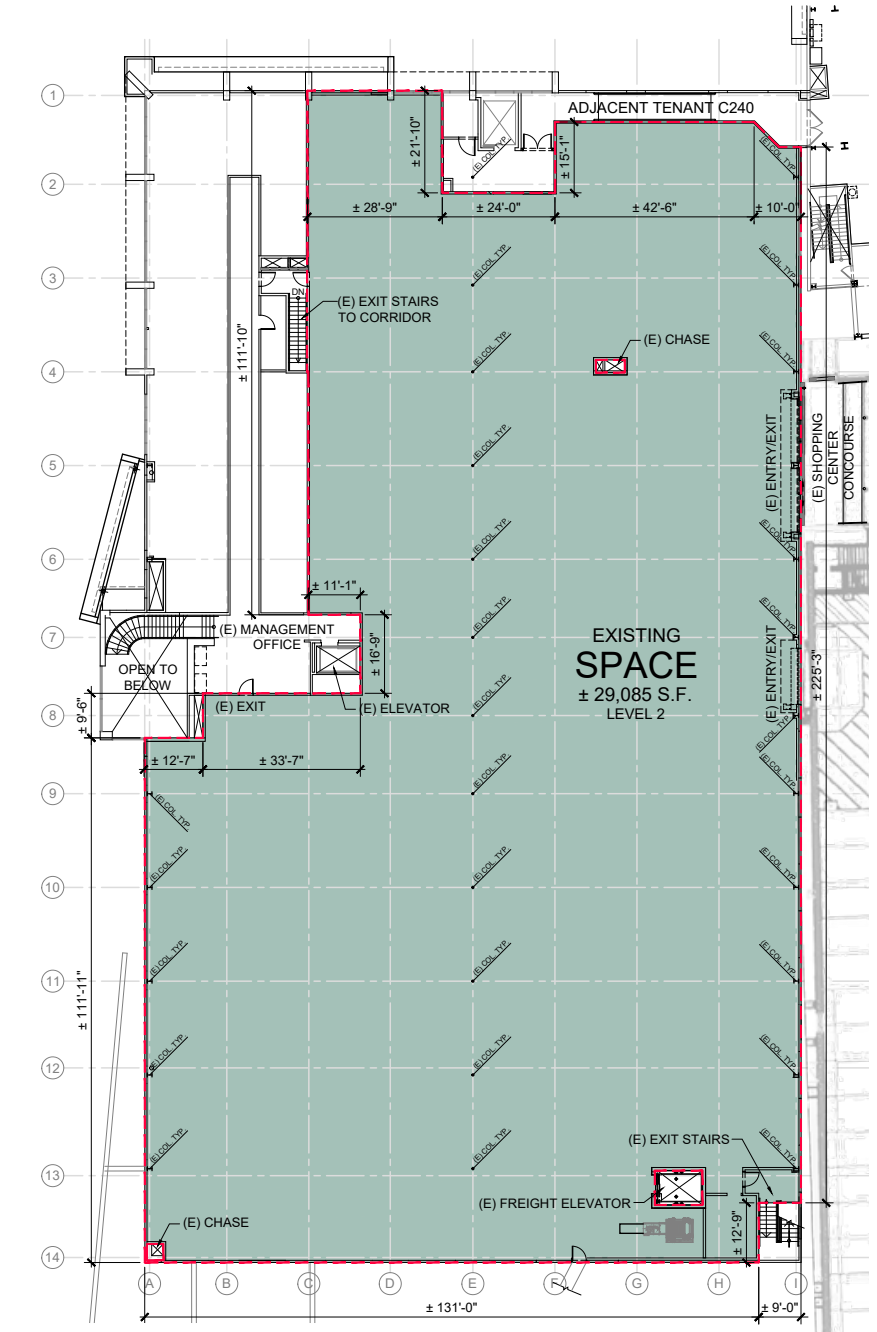
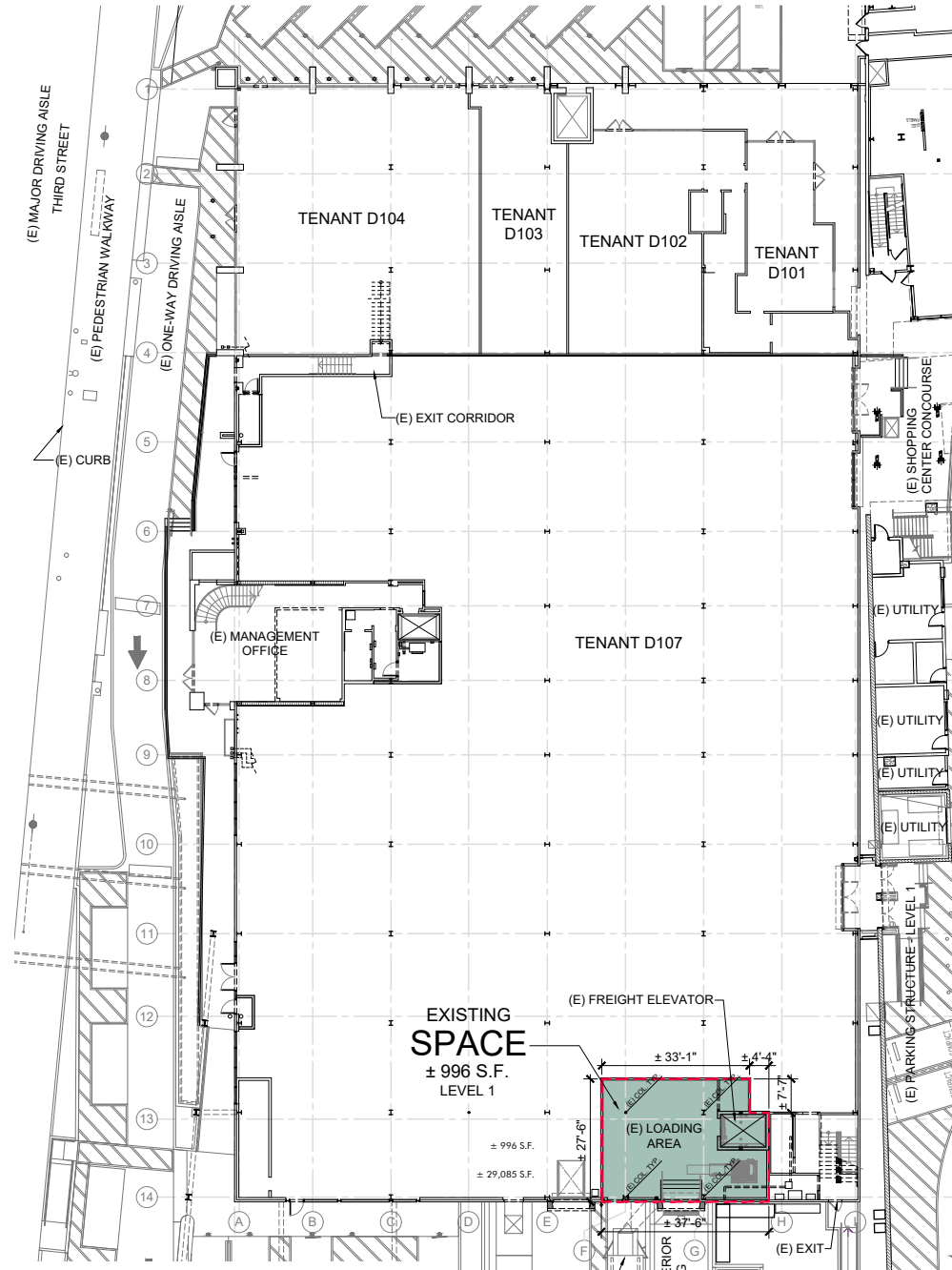
--- GLA - BOUNDARY AREA

# BUILDING D

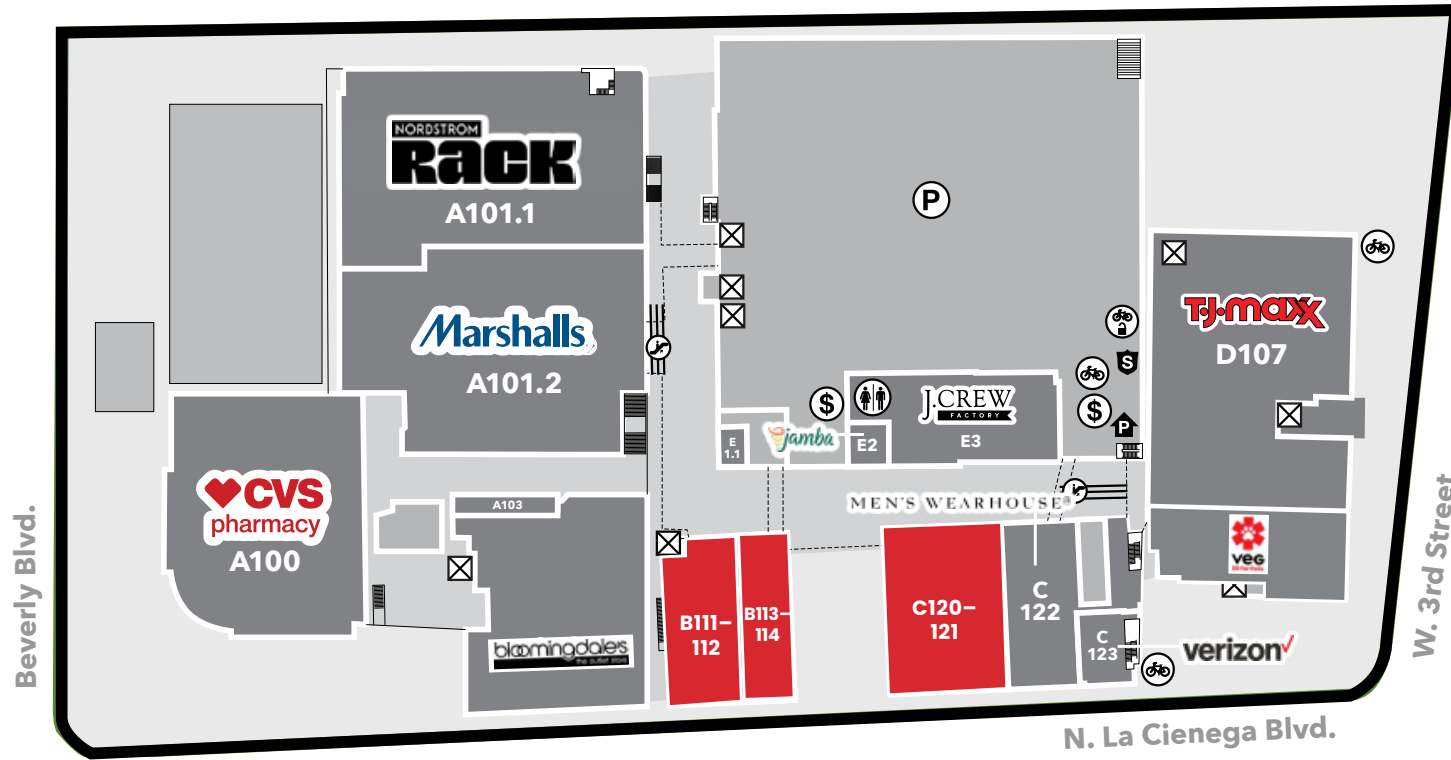


# FLOOR PLAN

**D201**  
BUILDING D  
LEVEL 1 (LOADING AREA)  
±996 SF  
LEVEL 2  
±29,085 SF  
**TOTAL**  
±30,081 SF



# LEVEL 1



# LEVEL 2



# SITE PLAN

## AVAILABLE

### BUILDING B

Suite	Level	Size
B111-114	Level 1	±9,130 SF
B231-B233	Level 2	±8,279 SF
<b>Total</b>		<b>±17,409 SF</b>

### BUILDING C

Suite	Level	Size
C120	Level 1	±9,177 SF
C240	Level 2	±17,876 SF
<b>Total</b>		<b>±27,053 SF</b>

### BUILDING D

Suite	Level	Size
D201 (Loading area)	Level 1	±996 SF
D201	Level 2	±29,085 SF
<b>Total</b>		<b>±30,081 SF</b>



  
CEDARS-SINAI

BEVERLY  
CENTER

PDC  
PACIFIC DESIGN CENTER

SOFITEL  
HOTELS & RESORTS

BEVERLY CONNECTION

MELROSE AVENUE

SUNSET STRIP

# JAY LUCHS GROUP

RETAIL ESTATE | LOS ANGELES

[JAYLUCHS.COM](http://JAYLUCHS.COM)

**JAY LUCHS**

Executive Vice Chairman  
T 310-407-6585  
[jay.luchs@nmrk.com](mailto:jay.luchs@nmrk.com)  
CA RE Lic. #01260345

**CARLY GELLER**

Director  
T 310-593-0760  
[carly.geller@nmrk.com](mailto:carly.geller@nmrk.com)  
CA RE Lic. #02153582

**NEWMARK**

PACIFIC

**CORPORATE RE LICENSE #01796698**

The information contained herein has been obtained from sources deemed reliable but has not been verified and no guarantee, warranty or representation, either express or implied, is made with respect to such information. Terms of sale or lease and availability are subject to change or withdrawal without notice.