

ENCINO TOWN CENTER

For Lease
310 407 6585
Jay Luchs
Los Angeles

NEWMARK
PACIFIC

CBRE

TWO ANCHOR
SPACES
AVAILABLE

ADDRESS

17200 Ventura Boulevard, Suite 121
Encino, CA 91316

FORMERLY

Laemmle Theatres

USE

Retail

SIZE

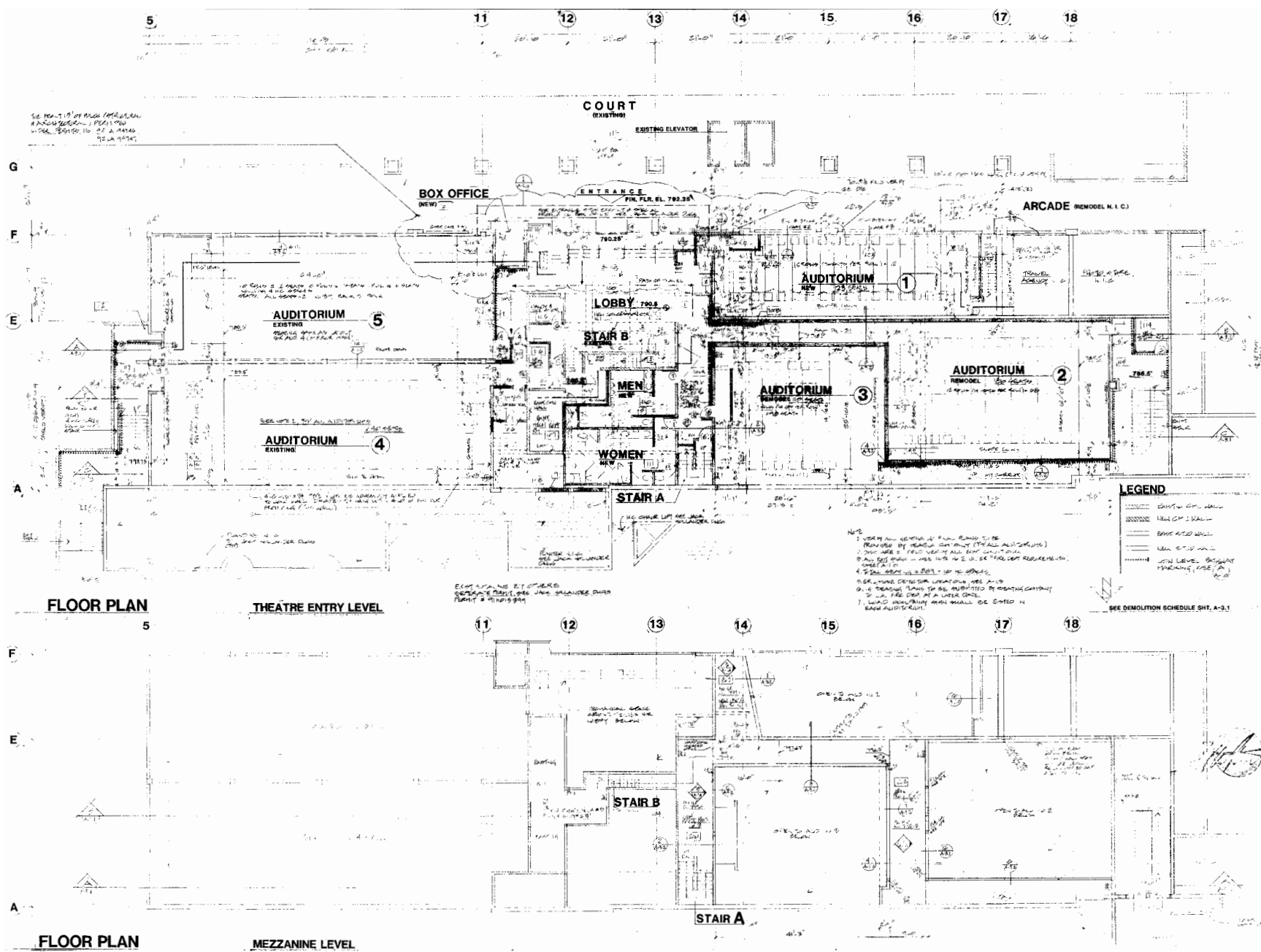
±15,147 SF (Divisible to ±7,000-8,000 SF)

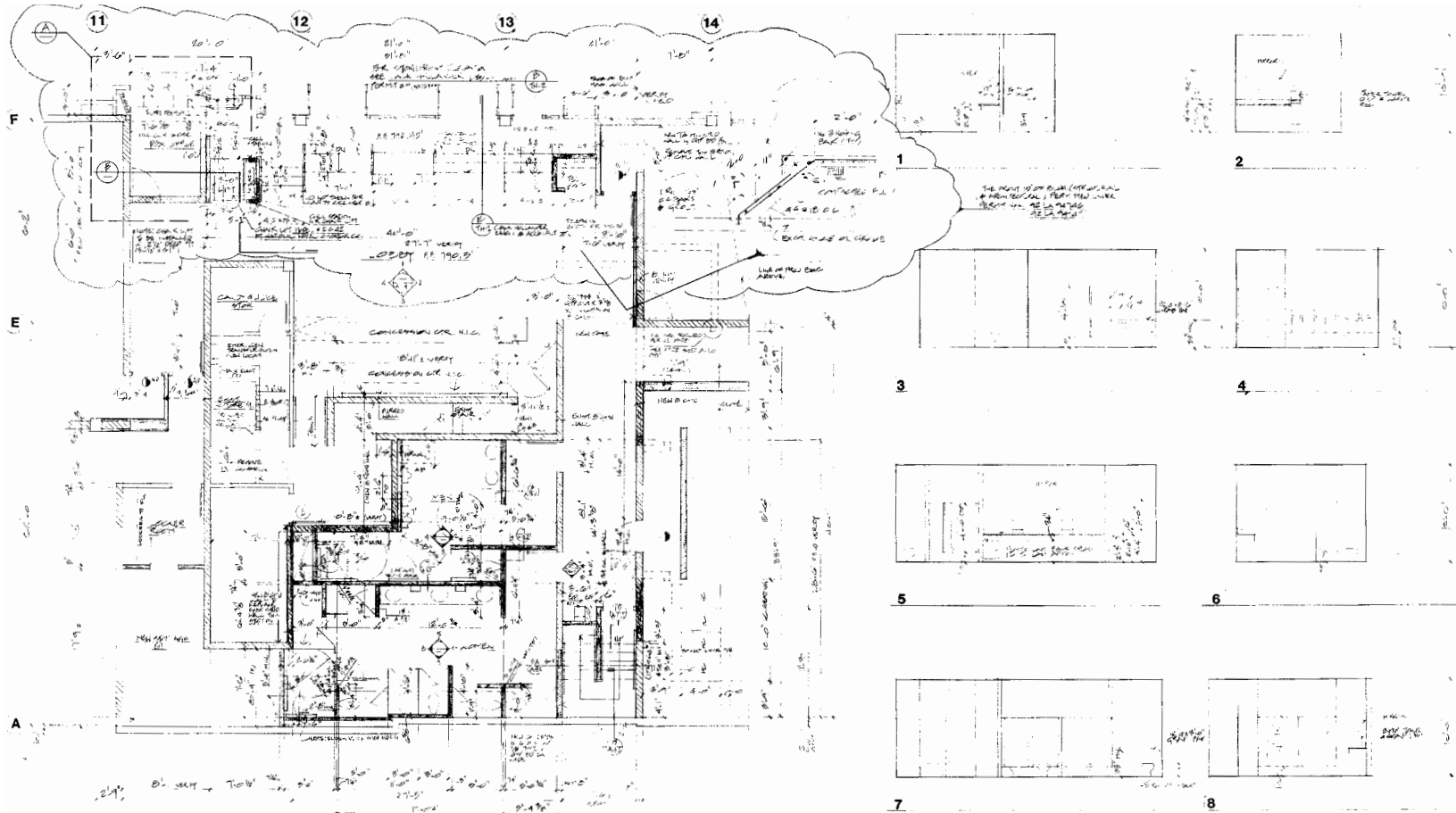
RENT

Available upon Request



FLOOR PLAN

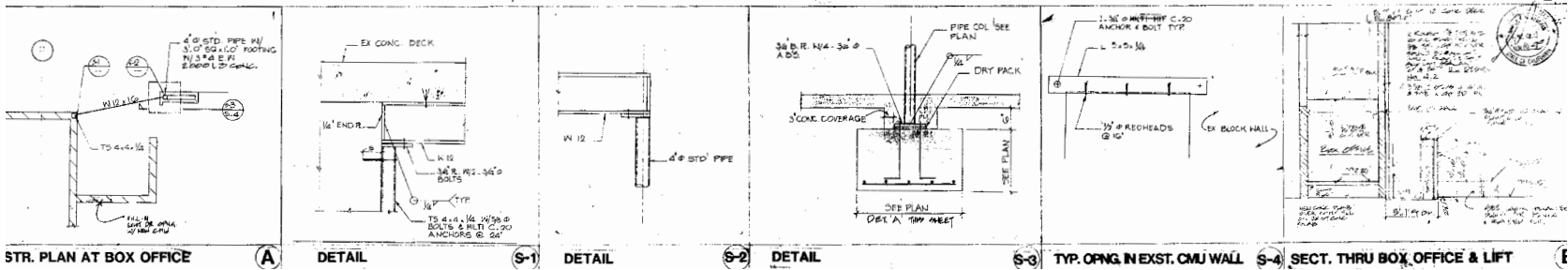




PARTIAL FLOOR PLAN AT TOILETS & CONCESSION

INTERIOR

ELEVATIONS



STR. PLAN AT BOX OFFICE

DETAIL

S-1

DETAIL

DETAIL

S-3

S-4

SECT. THRU BOX OFFICE & LIFT

ADDRESS

17150 Ventura Boulevard
Encino, CA 91316

FORMERLY

PetSmart

USE

Retail

SIZE

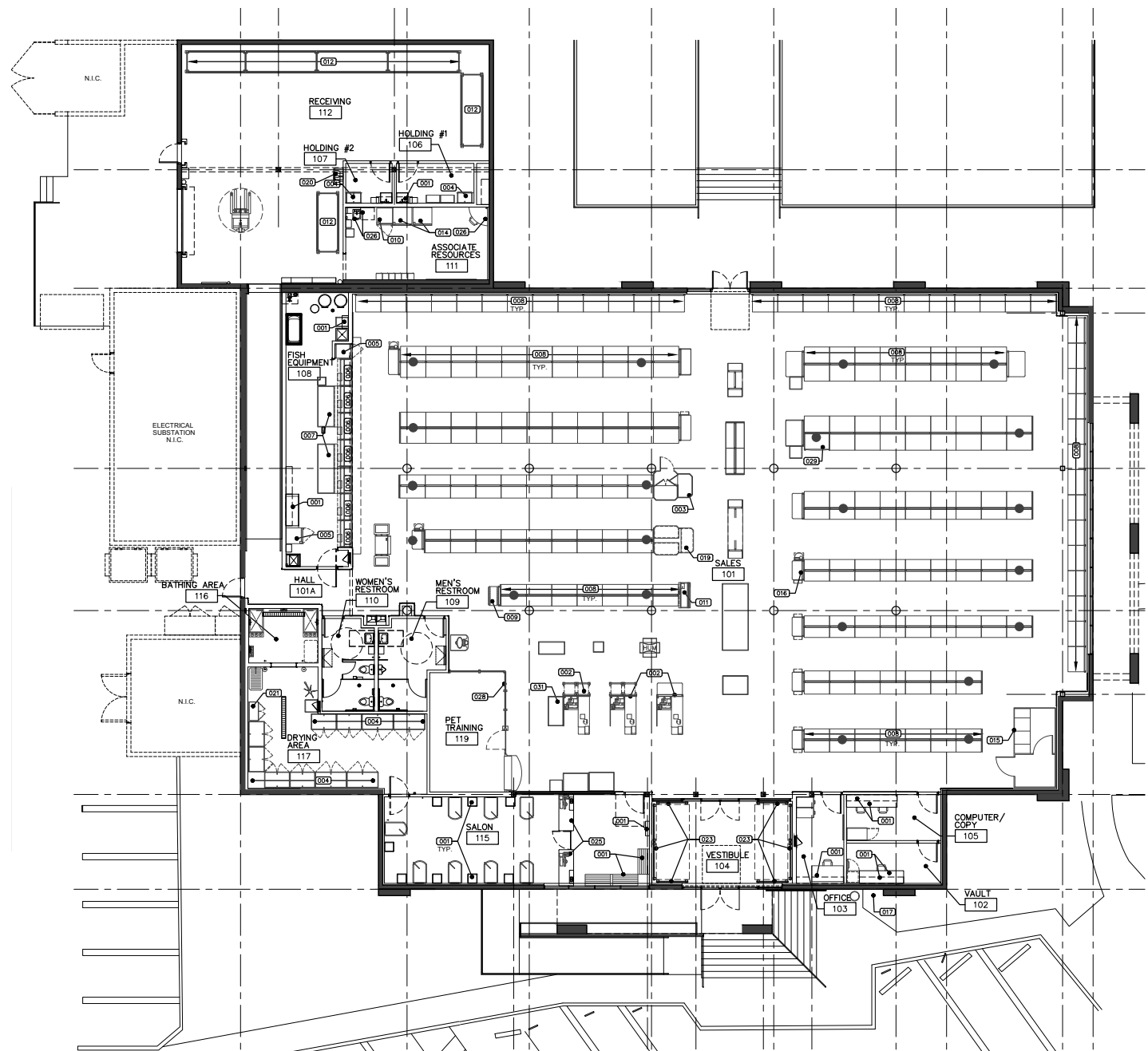
±13,810 SF

RENT

Available upon Request



FLOOR PLAN





ENCINO TOWN CENTER

A prominent retail and office complex located in the vibrant core of Encino, California, along Ventura Boulevard. This dynamic center offers a mix of retail stores, restaurants, and professional office suites, serving both the local community and daily commuters. Encino Town Center stands out for its excellent visibility, extensive surface parking, and accessible, walkable design. With a variety of tenants and strong daily visitor activity, Encino Town Center benefits from its close proximity to upscale residential areas and convenient freeway connections, making it a prime choice for both businesses and shoppers.





140,000+ SF

OF RETAIL,
RESTAURANTS,
AND OFFICE



±164,800
MONTHLY VISITS*

56
AVERAGE
DWELL TIME*



± 900'
LINEAR FEET
OF FRONTAGE
ON VENTURA
BOULEVARD



548
PARKING SPACES
409 SURFACE
SPACES
139
SUBTERRANEAN
SPACES



101 Freeway
±1.1 MILES AWAY
(5 MIN DRIVE)
405 Freeway
±3.1 MILES AWAY
(13 MIN DRIVE)

ENCINO TOWN CENTER PHOTOS





405 FREEWAY



±45,629
CARS PER DAY

ENCINO
TOWN
CENTER

LOUISE AVE

VENTURA BLVD



WARNER CENTER

ENCINO TOWN CENTER

VENTURA BLVD

±49,099
CARS PER DAY

CVS

The North Face

usbank

chili's

Starbucks

TELAVIV

Boost

ENCINO COURTYARD

pressed

OAKBERRY

crumbl

Coral Tree Cafe

Nihonji

Three Dog Bakery

COFFEE BEAN
TEA LEAF

ping pong

my gym

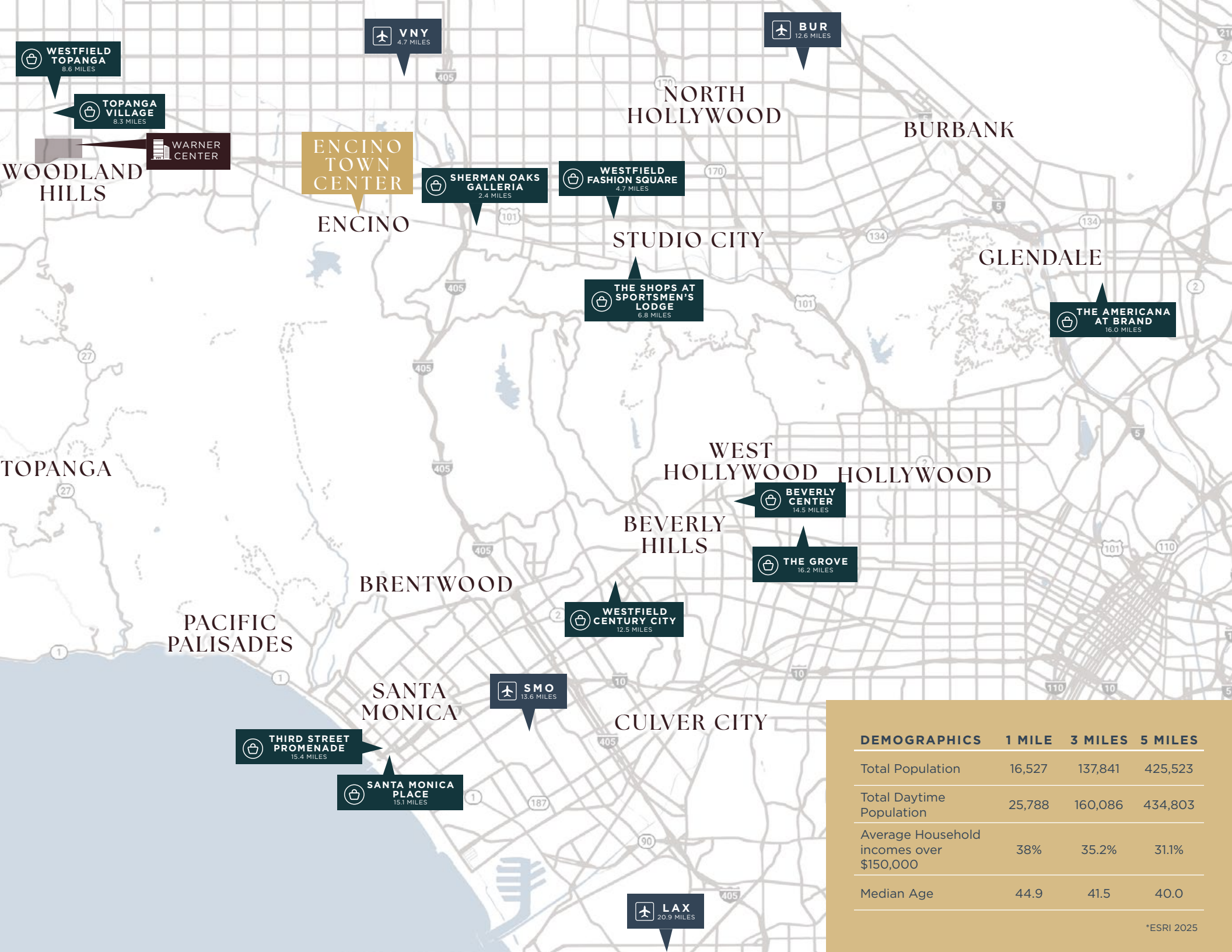
menchie's

corepower YOGA

Habit
BURGER & GRILL

B

CHASE



DEMOGRAPHICS	1 MILE	3 MILES	5 MILES
Total Population	16,527	137,841	425,523
Total Daytime Population	25,788	160,086	434,803
Average Household incomes over \$150,000	38%	35.2%	31.1%
Median Age	44.9	41.5	40.0



The information contained herein has been obtained from sources deemed reliable but has not been verified and no guarantee, warranty or representation, either express or implied, is made with respect to such information. Terms of sale or lease and availability are subject to change or withdrawal without notice.

Corporate RE License #01796698

jayluchs.com
For Lease
310 407 6585
Jay Luchs
 Los Angeles

NEWMARK
 PACIFIC

CBRE

JAY LUCHS
 Vice Chairman
 T 310-407-6585
 jay.luchs@nrmk.com
 CA RE Lic. #01260345
JAYLUCHS.COM

GAVIN KETCHUM
 Director
 T 310-407-6593
 gavin.ketchum@nrmk.com
 CA RE Lic. #01929170

RYAN GURMAN
 First Vice President
 T 310-650-7545
 ryan.gurman@cbre.com
 CA RE Lic. #01972081