

# MALIBU SANDS CENTER

22333 PACIFIC COAST HIGHWAY, MALIBU



RETAIL • OFFICE OPPORTUNITIES

**JAY LUCHS**

VICE CHAIRMAN | LIC. 01260345  
JAY.LUCHS@NMRK.COM  
T. 310 407 6585

**CARINE MAMANN**

EXECUTIVE DIRECTOR | LIC. 01734150  
CARINE.MAMANN@CUSHWAKE.COM  
T. 310 595 2235

**KAZUKO Y. MORGAN**

VICE CHAIRMAN | LIC. 01070005  
KAZUKO.MORGAN@CUSHWAKE.COM  
T. 415 773 3546







**MALIBU SANDS CENTER  
IS AN UPSCALE RETAIL CENTER  
FEATURING NEWLY RENOVATED SPACES  
ON THE HIGHLY TRAFFICKED PACIFIC COAST HIGHWAY.**

**PREMISES**

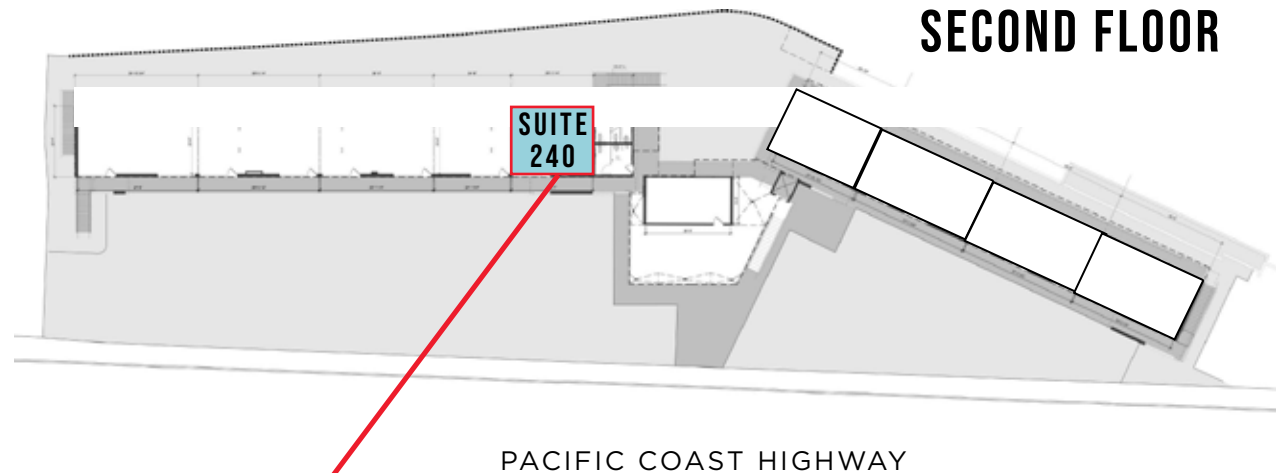


# SITE PLAN

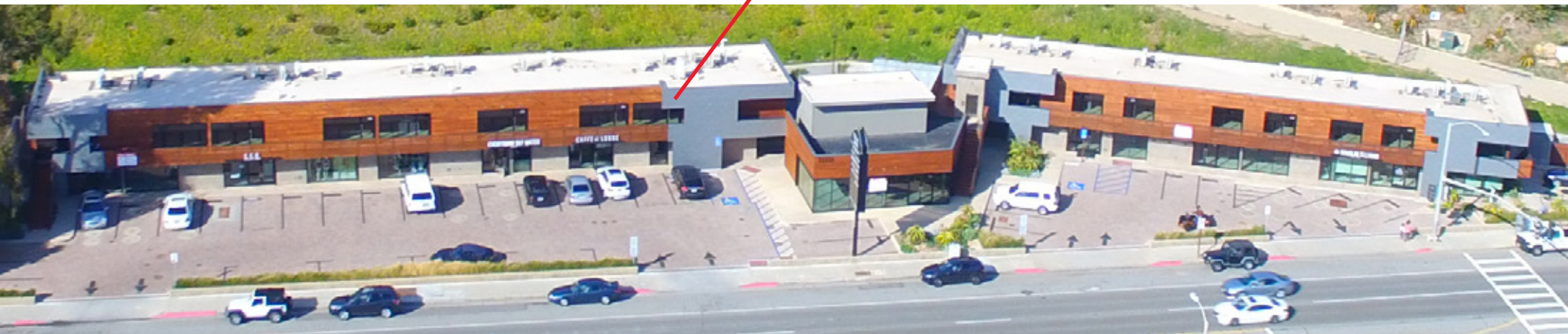
## SECOND FLOOR APPROXIMATELY 579 SF

AVAILABLE IMMEDIATELY  
ON-SITE PARKING

Located directly on the Pacific Coast Highway, this newly renovated two-story property offers excellent exposure to approximately 44,000 vehicles passing daily. There is existing monument signage, 44 on-site parking spaces, and a traffic light at the parking entry allowing for easy access to the Center.



 AVAILABLE





# MALIBU SANDS CENTER

RETAIL • OFFICE OPPORTUNITIES



## JAY LUCHS

VICE CHAIRMAN | LIC. 01260345  
JAY.LUCHS@NMRK.COM  
T. 310 407 6585

## CARINE MAMANN

EXECUTIVE DIRECTOR | LIC. 01734150  
CARINE.MAMANN@CUSHWAKE.COM  
T. 310 595 2235

## KAZUKO Y. MORGAN

VICE CHAIRMAN | LIC. 01070005  
KAZUKO.MORGAN@CUSHWAKE.COM  
T. 415 773 3546



THE INFORMATION CONTAINED HEREIN HAS BEEN OBTAINED FROM SOURCES DEEMED RELIABLE BUT HAS NOT BEEN VERIFIED AND NO GUARANTEE, WARRANTY OR REPRESENTATION, EITHER EXPRESS OR IMPLIED, IS MADE WITH RESPECT TO SUCH INFORMATION. TERMS OF SALE OR LEASE AND AVAILABILITY ARE SUBJECT TO CHANGE OR WITHDRAWAL WITHOUT NOTICE.

©2023 CUSHMAN & WAKEFIELD. NO WARRANTY OR REPRESENTATION, EXPRESS OR IMPLIED, IS MADE TO THE ACCURACY OR COMPLETENESS OF THE INFORMATION CONTAINED HEREIN, AND SAME IS SUBMITTED SUBJECT TO ERRORS, OMISSIONS, CHANGE OF PRICE, RENTAL OR OTHER CONDITIONS, WITHDRAWAL WITHOUT NOTICE, AND TO ANY SPECIAL LISTING CONDITIONS IMPOSED BY THE PROPERTY OWNER(S). AS APPLICABLE, WE MAKE NO REPRESENTATION AS TO THE CONDITION OF THE PROPERTY (OR PROPERTIES) IN QUESTION.