

MALIBU SANDS CENTER

22333 PACIFIC COAST HIGHWAY | MALIBU, CALIFORNIA



NEWMARK

JAY LUCHS

Vice Chairman
T 310-407-6585
jay.luchs@nmrk.com
CA RE Lic. #01260345
JAYLUCHS.COM

GENNY CHANG

Managing Director
T 310-407-6588
genny.chang@nmrk.com
CA RE Lic. #01467375

 **CUSHMAN & WAKEFIELD**

KAZUKO Y. MORGAN

Executive Vice Chairman
T 415-773-3546
kazuko.morgan@cushwake.com
CA RE Lic. #01070005

CARINE MAMANN

Executive Managing Director
T 310-595-2235
carine.mamann@cushwake.com
CA RE Lic. #01734150



SUITE 240
Retail
2nd Floor
±579 SF

SUITE 150
Restaurant
Ground/2nd Floor
±1,944 SF

Malibu Sands Center is an upscale retail center located directly on the picturesque Pacific Coast Highway and centrally located in Malibu's Carbon Beach. Malibu Sands Center tenants include: Caffe Luxxe, Tri Star Electric, Petulla Pictures, Douglas Elliman, and Kennedy Wilson.

NEWMARK

JAY LUCHS
Vice Chairman
T 310-407-6585
jay.luchs@nmrk.com
CA RE Lic. #01260345
JAYLUCHS.COM

GENNY CHANG
Managing Director
T 310-407-6588
genny.chang@nmrk.com
CA RE Lic. #01467375

CUSHMAN & WAKEFIELD

KAZUKO Y. MORGAN
Executive Vice Chairman
T 415-773-3546
kazuko.morgan@cushwake.com
CA RE Lic. #01070005

CARINE MAMANN
Executive Managing Director
T 310-595-2235
carine.mamann@cushwake.com
CA RE Lic. #01734150



ADDRESS

22333 Pacific Coast Highway, Suite 150
Malibu, CA 90265

USE

Restaurant

SIZE

Ground Floor: ±1,493 SF
2nd Floor: ±451 SF
Total: ±1,944 SF

RENT

Ground Floor: \$8 PSF per month NNN
2nd Floor: \$4 PSF per month NNN

NNN

±\$3.76 PSF per month

PARKING

Ample on-site parking available

HIGHLIGHTS

- Great visibility and signage opportunity along Pacific Coast Hwy
- Large windows and concrete flooring
- Kitchen
- Ground floor outdoor seating available in rear courtyard
- 2nd Floor bar and patio
- Staircase and elevator access

NEWMARK

JAY LUCHS

Vice Chairman
T 310-407-6585
jay.luchs@nmrk.com
CA RE Lic. #01260345
JAYLUCHS.COM

GENNY CHANG

Managing Director
T 310-407-6588
genny.chang@nmrk.com
CA RE Lic. #01467375

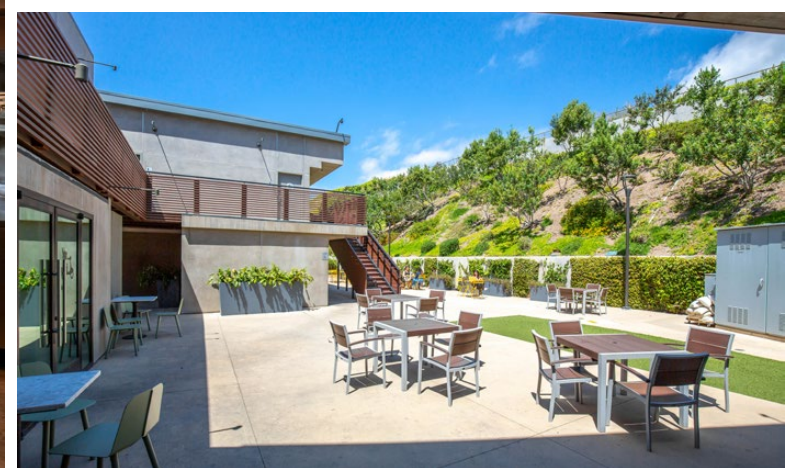
CUSHMAN & WAKEFIELD

KAZUKO Y. MORGAN

Executive Vice Chairman
T 415-773-3546
kazuko.morgan@cushwake.com
CA RE Lic. #01070005

CARINE MAMANN

Executive Managing Director
T 310-595-2235
carine.mamann@cushwake.com
CA RE Lic. #01734150



NEWMARK

JAY LUCHS

Vice Chairman
T 310-407-6585
jay.luchs@nmrk.com
CA RE Lic. #01260345
JAYLUCHS.COM

GENNY CHANG

Managing Director
T 310-407-6588
genny.chang@nmrk.com
CA RE Lic. #01467375



CUSHMAN & WAKEFIELD

KAZUKO Y. MORGAN

Executive Vice Chairman
T 415-773-3546
kazuko.morgan@cushwake.com
CA RE Lic. #01070005

CARINE MAMANN

Executive Managing Director
T 310-595-2235
carine.mamann@cushwake.com
CA RE Lic. #01734150

SUITE 150 | 2ND FLOOR PHOTOS



NEWMARK

JAY LUCHS

Vice Chairman
T 310-407-6585
jay.luchs@nmrk.com
CA RE Lic. #01260345
JAYLUCHS.COM

GENNY CHANG

Managing Director
T 310-407-6588
genny.chang@nmrk.com
CA RE Lic. #01467375



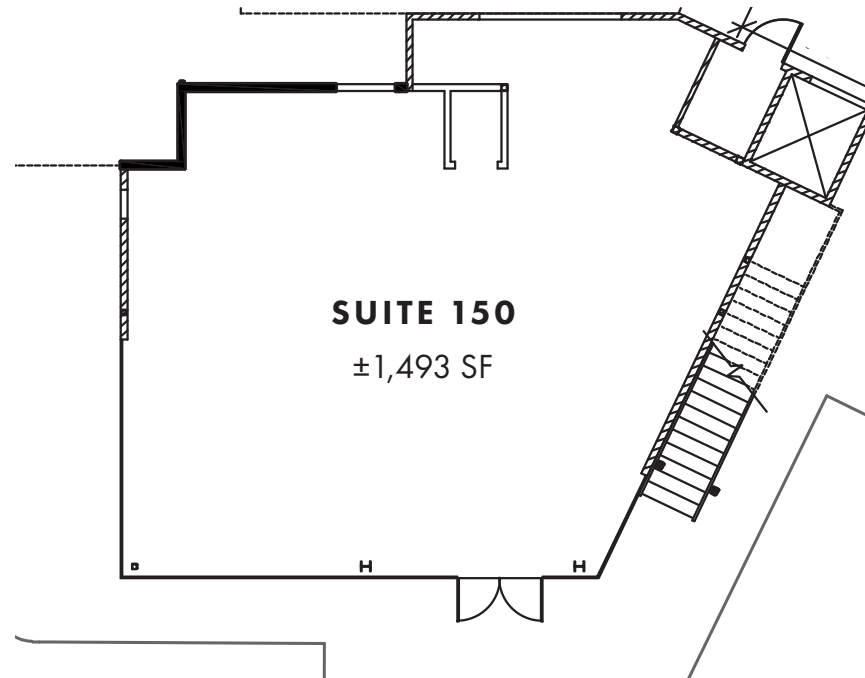
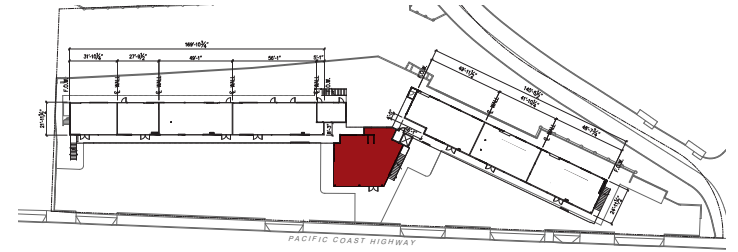
CUSHMAN & WAKEFIELD

KAZUKO Y. MORGAN

Executive Vice Chairman
T 415-773-3546
kazuko.morgan@cushwake.com
CA RE Lic. #01070005

CARINE MAMANN

Executive Managing Director
T 310-595-2235
carine.mamann@cushwake.com
CA RE Lic. #01734150



NEWMARK

JAY LUCHS

Vice Chairman
T 310-407-6585
jay.luchs@nmrk.com
CA RE Lic. #01260345
JAYLUCHS.COM

GENNY CHANG

Managing Director
T 310-407-6588
genny.chang@nmrk.com
CA RE Lic. #01467375

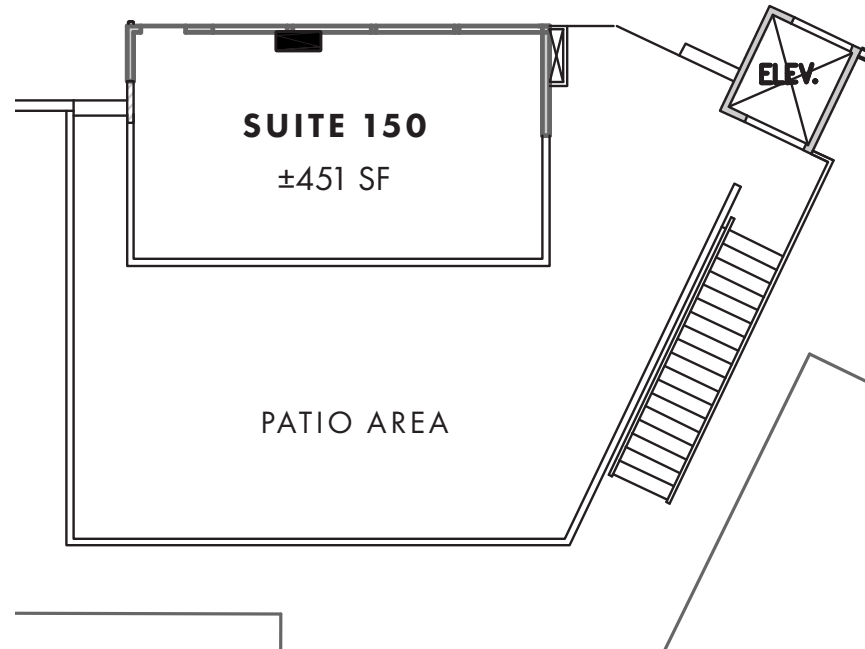
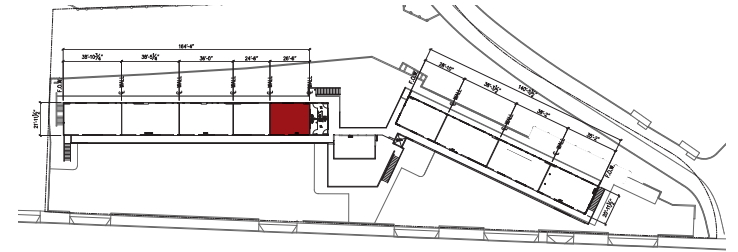


KAZUKO Y. MORGAN

Executive Vice Chairman
T 415-773-3546
kazuko.morgan@cushwake.com
CA RE Lic. #01070005

CARINE MAMANN

Executive Managing Director
T 310-595-2235
carine.mamann@cushwake.com
CA RE Lic. #01734150



NEWMARK

JAY LUCHS

Vice Chairman
T 310-407-6585
jay.luchs@nmrk.com
CA RE Lic. #01260345
JAYLUCHS.COM

GENNY CHANG

Managing Director
T 310-407-6588
genny.chang@nmrk.com
CA RE Lic. #01467375



KAZUKO Y. MORGAN

Executive Vice Chairman
T 415-773-3546
kazuko.morgan@cushwake.com
CA RE Lic. #01070005

CARINE MAMANN

Executive Managing Director
T 310-595-2235
carine.mamann@cushwake.com
CA RE Lic. #01734150

ADDRESS

22333 Pacific Coast Highway, Suite 240
Malibu, CA 90265

USE

2nd Floor Retail

SIZE

±579 SF

RENT

\$5 PSF per month NNN

NNN

±\$3.76 PSF per month

PARKING

Ample on-site parking available

HIGHLIGHTS

- Great views of Pacific Coast Hwy
- Signage opportunity along Pacific Coast Hwy
- Staircase and elevator access



NEWMARK

JAY LUCHS

Vice Chairman
T 310-407-6585
jay.luchs@nrmk.com
CA RE Lic. #01260345
JAYLUCHS.COM

GENNY CHANG

Managing Director
T 310-407-6588
genny.chang@nrmk.com
CA RE Lic. #01467375



CUSHMAN & WAKEFIELD

KAZUKO Y. MORGAN

Executive Vice Chairman
T 415-773-3546
kazuko.morgan@cushwake.com
CA RE Lic. #01070005

CARINE MAMANN

Executive Managing Director
T 310-595-2235
carine.mamann@cushwake.com
CA RE Lic. #01734150

SUITE 240 | 2ND FLOOR PHOTOS



MALIBU SANDS CENTER



NEWMARK

JAY LUCHS

Vice Chairman
T 310-407-6585
jay.luchs@nmrk.com
CA RE Lic. #01260345
JAYLUCHS.COM

GENNY CHANG

Managing Director
T 310-407-6588
genny.chang@nmrk.com
CA RE Lic. #01467375

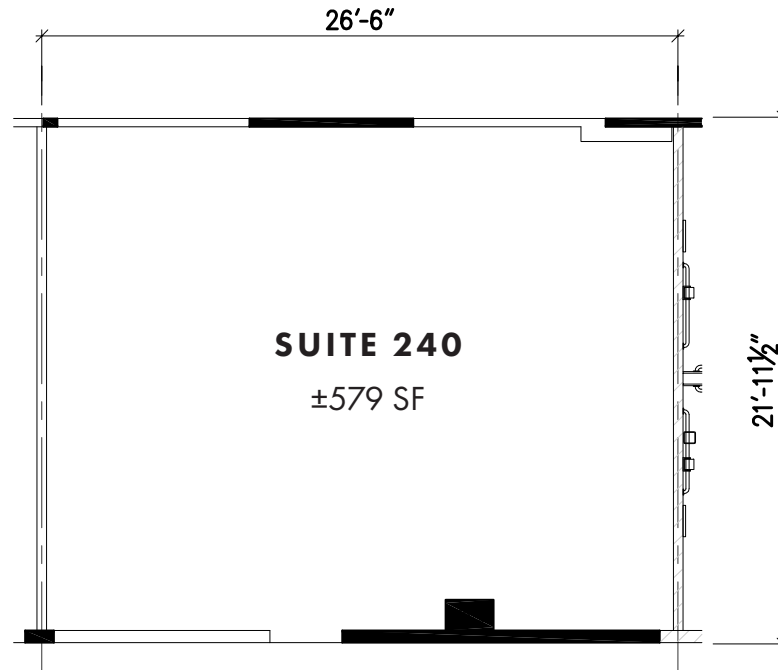
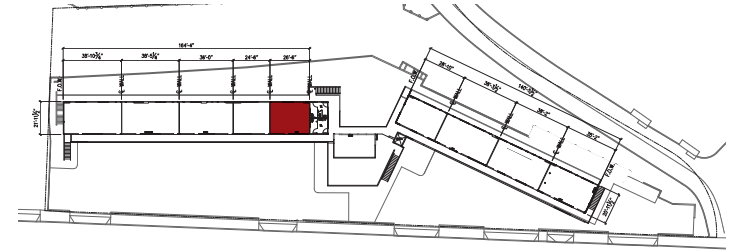
CUSHMAN & WAKEFIELD

KAZUKO Y. MORGAN

Executive Vice Chairman
T 415-773-3546
kazuko.morgan@cushwake.com
CA RE Lic. #01070005

CARINE MAMANN

Executive Managing Director
T 310-595-2235
carine.mamann@cushwake.com
CA RE Lic. #01734150



NEWMARK

JAY LUCHS
Vice Chairman
T 310-407-6585
jay.luchs@nrmk.com
CA RE Lic. #01260345
JAYLUCHS.COM

GENNY CHANG
Managing Director
T 310-407-6588
genny.chang@nrmk.com
CA RE Lic. #01467375



KAZUKO Y. MORGAN
Executive Vice Chairman
T 415-773-3546
kazuko.morgan@cushwake.com
CA RE Lic. #01070005

CARINE MAMANN
Executive Managing Director
T 310-595-2235
carine.mamann@cushwake.com
CA RE Lic. #01734150



NEWMARK

JAY LUCHS

Vice Chairman
T 310-407-6585
jay.luchs@nmrk.com
CA RE Lic. #01260345
JAYLUCHS.COM

GENNY CHANG

Managing Director
T 310-407-6588
genny.chang@nmrk.com
CA RE Lic. #01467375

CUSHMAN & WAKEFIELD

KAZUKO Y. MORGAN

Executive Vice Chairman
T 415-773-3546
kazuko.morgan@cushwake.com
CA RE Lic. #01070005

CARINE MAMANN

Executive Managing Director
T 310-595-2235
carine.mamann@cushwake.com
CA RE Lic. #01734150

MALIBU SANDS CENTER

22333 PACIFIC COAST HIGHWAY | MALIBU, CALIFORNIA



The information contained herein has been obtained from sources deemed reliable but has not been verified and no guarantee, warranty or representation, either express or implied, is made with respect to such information. Terms of sale or lease and availability are subject to change or withdrawal without notice.

NEWMARK

Corporate RE Lic. #01355491

JAY LUCHS

Vice Chairman
T 310-407-6585

jay.luchs@nrmk.com
CA RE Lic. #01260345
JAYLUCHS.COM

GENNY CHANG

Managing Director
T 310-407-6588

genny.chang@nrmk.com
CA RE Lic. #01467375



CUSHMAN & WAKEFIELD

KAZUKO Y. MORGAN

Executive Vice Chairman
T 415-773-3546

kazuko.morgan@cushwake.com
CA RE Lic. #01070005

CARINE MAMANN

Executive Managing Director
T 310-595-2235

carine.mamann@cushwake.com
CA RE Lic. #01734150