

MALIBU SANDS CENTER

22333 PACIFIC COAST HIGHWAY | MALIBU, CALIFORNIA



NEWMARK
PACIFIC

JAY LUCHS
Executive Vice Chairman
T 310-407-6585
jay.luchs@nmrk.com
CA RE Lic. #01260345
JAYLUCHS.COM

GENNY CHANG
Managing Director
T 310-407-6588
genny.chang@nmrk.com
CA RE Lic. #01467375

 **CUSHMAN &
WAKEFIELD**

KAZUKO Y. MORGAN
Executive Vice Chairman
T 415-773-3546
kazuko.morgan@cushwake.com
CA RE Lic. #01070005

CARINE MAMANN
Executive Managing Director
T 310-595-2235
carine.mamann@cushwake.com
CA RE Lic. #01734150

SUITE 240

Retail
2nd Floor
±579 SF

SUITE 100

Retail
Ground Floor
±1,191 SF

Malibu Sands Center is an upscale retail center located directly on the picturesque Pacific Coast Highway and centrally located in Malibu's Carbon Beach. Malibu Sands Center tenants include: Caffe Luxxe, Tri Star Electric, Petulla Pictures, Douglas Elliman, and Kennedy Wilson.

NEWMARK
PACIFIC

JAY LUCHS

Executive Vice Chairman
T 310-407-6585
jay.luchs@nmrk.com
CA RE Lic. #01260345
JAYLUCHS.COM

GENNY CHANG

Managing Director
T 310-407-6588
genny.chang@nmrk.com
CA RE Lic. #01467375

**CUSHMAN &
WAKEFIELD**

KAZUKO Y. MORGAN

Executive Vice Chairman
T 415-773-3546
kazuko.morgan@cushwake.com
CA RE Lic. #01070005

CARINE MAMANN

Executive Managing Director
T 310-595-2235
carine.mamann@cushwake.com
CA RE Lic. #01734150



ADDRESS

22333 Pacific Coast Highway, Suite 100
Malibu, CA 90265

USE

Retail

SIZE

±1,191 SF

RENT

Available upon Request

PARKING

Ample on-site parking available

HIGHLIGHTS

- Excellent visibility and signage opportunities on Pacific Coast Highway
- Expansive windows providing ample natural light
- Stunning views overlooking Pacific Coast Highway

NEWMARK
PACIFIC

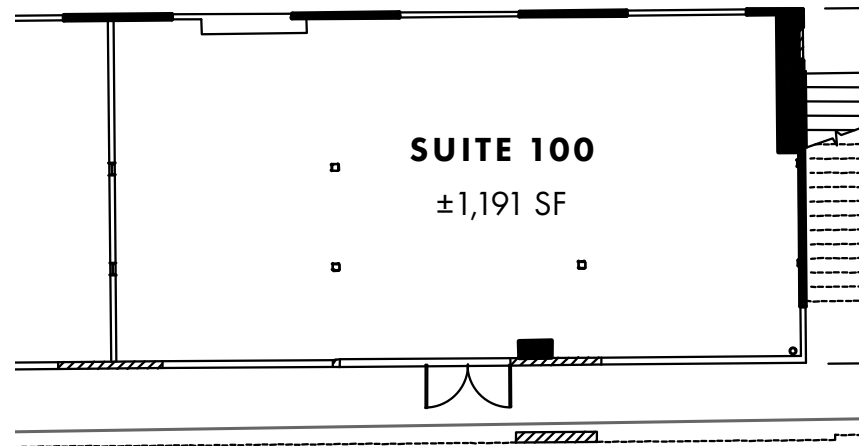
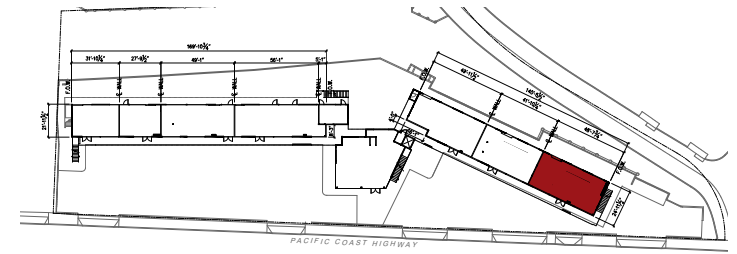
JAY LUCHS
Executive Vice Chairman
T 310-407-6585
jay.luchs@nmrk.com
CA RE Lic. #01260345
JAYLUCHS.COM

GENNY CHANG
Managing Director
T 310-407-6588
genny.chang@nmrk.com
CA RE Lic. #01467375

CUSHMAN & WAKEFIELD

KAZUKO Y. MORGAN
Executive Vice Chairman
T 415-773-3546
kazuko.morgan@cushwake.com
CA RE Lic. #01070005

CARINE MAMANN
Executive Managing Director
T 310-595-2235
carine.mamann@cushwake.com
CA RE Lic. #01734150



NEWMARK
PACIFIC

JAY LUCHS
Executive Vice Chairman
T 310-407-6585
jay.luchs@nmrk.com
CA RE Lic. #01260345
JAYLUCHS.COM

GENNY CHANG
Managing Director
T 310-407-6588
genny.chang@nmrk.com
CA RE Lic. #01467375

 **CUSHMAN & WAKEFIELD**

KAZUKO Y. MORGAN
Executive Vice Chairman
T 415-773-3546
kazuko.morgan@cushwake.com
CA RE Lic. #01070005

CARINE MAMANN
Executive Managing Director
T 310-595-2235
carine.mamann@cushwake.com
CA RE Lic. #01734150

SUITE 240 | PROPERTY DETAILS



MALIBU SANDS CENTER

ADDRESS

22333 Pacific Coast Highway, Suite 240
Malibu, CA 90265

USE

2nd Floor Retail

SIZE

±579 SF

RENT

Available upon Request

PARKING

Ample on-site parking available

HIGHLIGHTS

- Great views of Pacific Coast Hwy
- Signage opportunity along Pacific Coast Hwy
- Staircase and elevator access

NEWMARK
PACIFIC

JAY LUCHS
Executive Vice Chairman
T 310-407-6585
jay.luchs@nmrk.com
CA RE Lic. #01260345
JAYLUCHS.COM

GENNY CHANG
Managing Director
T 310-407-6588
genny.chang@nmrk.com
CA RE Lic. #01467375

**CUSHMAN &
WAKEFIELD**

KAZUKO Y. MORGAN
Executive Vice Chairman
T 415-773-3546
kazuko.morgan@cushwake.com
CA RE Lic. #01070005

CARINE MAMANN
Executive Managing Director
T 310-595-2235
carine.mamann@cushwake.com
CA RE Lic. #01734150

SUITE 240 | 2ND FLOOR PHOTOS



NEWMARK
PACIFIC

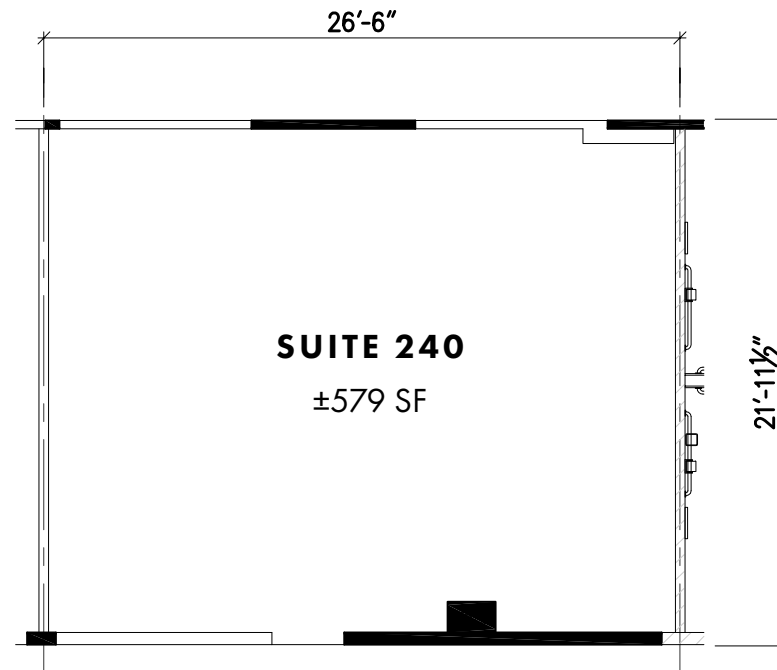
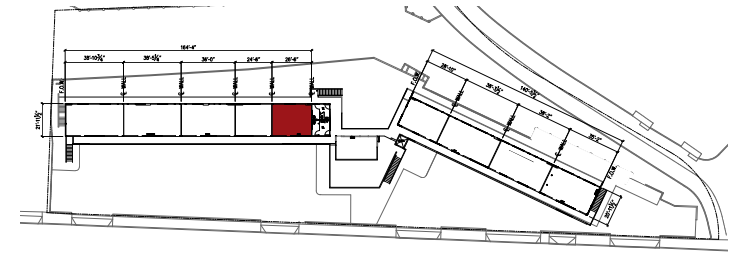
JAY LUCHS
Executive Vice Chairman
T 310-407-6585
jay.luchs@nmrk.com
CA RE Lic. #01260345
JAYLUCHS.COM

GENNY CHANG
Managing Director
T 310-407-6588
genny.chang@nmrk.com
CA RE Lic. #01467375

CUSHMAN & WAKEFIELD

KAZUKO Y. MORGAN
Executive Vice Chairman
T 415-773-3546
kazuko.morgan@cushwake.com
CA RE Lic. #01070005

CARINE MAMANN
Executive Managing Director
T 310-595-2235
carine.mamann@cushwake.com
CA RE Lic. #01734150



NEWMARK
PACIFIC

JAY LUCHS
Executive Vice Chairman
T 310-407-6585
jay.luchs@nmrk.com
CA RE Lic. #01260345
JAYLUCHS.COM

GENNY CHANG
Managing Director
T 310-407-6588
genny.chang@nmrk.com
CA RE Lic. #01467375

 **CUSHMAN &
WAKEFIELD**

KAZUKO Y. MORGAN
Executive Vice Chairman
T 415-773-3546
kazuko.morgan@cushwake.com
CA RE Lic. #01070005

CARINE MAMANN
Executive Managing Director
T 310-595-2235
carine.mamann@cushwake.com
CA RE Lic. #01734150



NEWMARK
PACIFIC

JAY LUCHS
Executive Vice Chairman
T 310-407-6585
jay.luchs@nmrk.com
CA RE Lic. #01260345
JAYLUCHS.COM

GENNY CHANG
Managing Director
T 310-407-6588
genny.chang@nmrk.com
CA RE Lic. #01467375

CUSHMAN & WAKEFIELD

KAZUKO Y. MORGAN
Executive Vice Chairman
T 415-773-3546
kazuko.morgan@cushwake.com
CA RE Lic. #01070005

CARINE MAMANN
Executive Managing Director
T 310-595-2235
carine.mamann@cushwake.com
CA RE Lic. #01734150

MALIBU SANDS CENTER

22333 PACIFIC COAST HIGHWAY | MALIBU, CALIFORNIA



The information contained herein has been obtained from sources deemed reliable but has not been verified and no guarantee, warranty or representation, either express or implied, is made with respect to such information. Terms of sale or lease and availability are subject to change or withdrawal without notice.

NEWMARK
PACIFIC

Corporate RE Lic. #01796698

JAY LUCHS

Executive Vice Chairman
T 310-407-6585
jay.luchs@nmrk.com
CA RE Lic. #01260345
JAYLUCHS.COM

GENNY CHANG

Managing Director
T 310-407-6588
genny.chang@nmrk.com
CA RE Lic. #01467375



**CUSHMAN &
WAKEFIELD**

KAZUKO Y. MORGAN

Executive Vice Chairman
T 415-773-3546
kazuko.morgan@cushwake.com
CA RE Lic. #01070005

CARINE MAMANN

Executive Managing Director
T 310-595-2235
carine.mamann@cushwake.com
CA RE Lic. #01734150