

# MALIBU SANDS CENTER

22333 PACIFIC COAST HIGHWAY | MALIBU, CALIFORNIA



**NEWMARK**  
PACIFIC

**JAY LUCHS**  
Executive Vice Chairman  
T 310-407-6585  
jay.luchs@nmrk.com  
CA RE Lic. #01260345  
**JAYLUCHS.COM**

**GENNY CHANG**  
Managing Director  
T 310-407-6588  
genny.chang@nmrk.com  
CA RE Lic. #01467375

 **CUSHMAN &  
WAKEFIELD**

**KAZUKO Y. MORGAN**  
Executive Vice Chairman  
T 415-773-3546  
kazuko.morgan@cushwake.com  
CA RE Lic. #01070005

**CARINE MAMANN**  
Executive Managing Director  
T 310-595-2235  
carine.mamann@cushwake.com  
CA RE Lic. #01734150



**SUITE 245**

Retail  
2nd Floor  
±538 SF

**SUITE 240**

Retail  
2nd Floor  
±579 SF

**SUITE 100**

Retail  
Ground Floor  
±1,191 SF

**Malibu Sands Center** is an upscale retail center located directly on the picturesque Pacific Coast Highway and centrally located in Malibu's Carbon Beach. Malibu Sands Center tenants include: Caffe Luxxe, Tri Star Electric, Petulla Pictures, Douglas Elliman, and Kennedy Wilson.

**NEWMARK**  
PACIFIC

**JAY LUCHS**

Executive Vice Chairman  
T 310-407-6585  
jay.luchs@nmrk.com  
CA RE Lic. #01260345  
**JAYLUCHS.COM**

**GENNY CHANG**

Managing Director  
T 310-407-6588  
genny.chang@nmrk.com  
CA RE Lic. #01467375



**CUSHMAN &  
WAKEFIELD**

**KAZUKO Y. MORGAN**

Executive Vice Chairman  
T 415-773-3546  
kazuko.morgan@cushwake.com  
CA RE Lic. #01070005

**CARINE MAMANN**

Executive Managing Director  
T 310-595-2235  
carine.mamann@cushwake.com  
CA RE Lic. #01734150





## ADDRESS

22333 Pacific Coast Highway, Suite 100  
Malibu, CA 90265

## USE

Retail

## SIZE

±1,191 SF

## RENT

Available upon Request

## PARKING

Ample on-site parking available

## HIGHLIGHTS

- Excellent visibility and signage opportunities on Pacific Coast Highway
- Expansive windows providing ample natural light
- Stunning views overlooking Pacific Coast Highway

**NEWMARK**  
PACIFIC

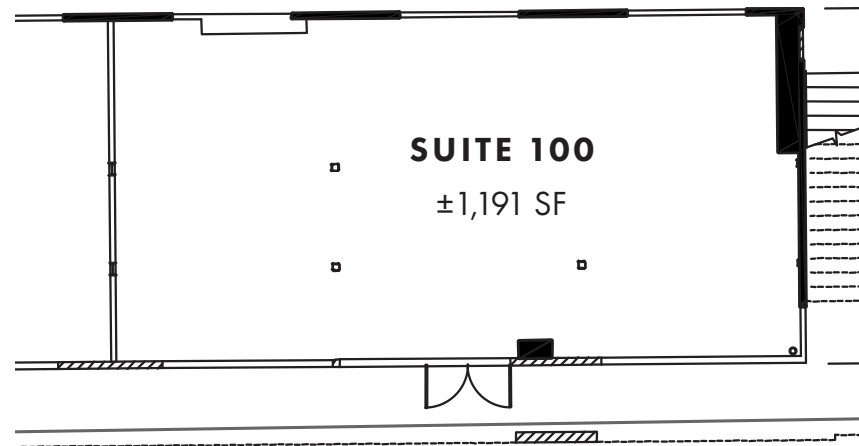
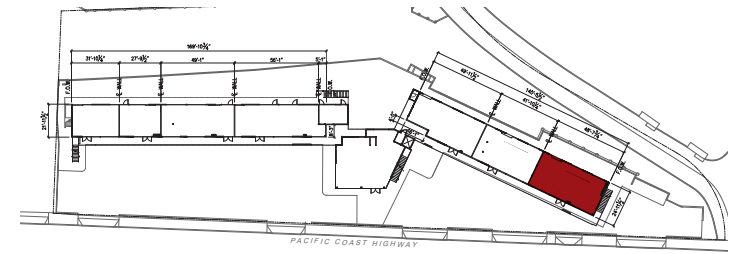
**JAY LUCHS**  
Executive Vice Chairman  
T 310-407-6585  
jay.luchs@nmrk.com  
CA RE Lic. #01260345  
**JAYLUCHS.COM**

**GENNY CHANG**  
Managing Director  
T 310-407-6588  
genny.chang@nmrk.com  
CA RE Lic. #01467375

**CUSHMAN & WAKEFIELD**

**KAZUKO Y. MORGAN**  
Executive Vice Chairman  
T 415-773-3546  
kazuko.morgan@cushwake.com  
CA RE Lic. #01070005

**CARINE MAMANN**  
Executive Managing Director  
T 310-595-2235  
carine.mamann@cushwake.com  
CA RE Lic. #01734150



**NEWMARK**  
PACIFIC

**JAY LUCHS**  
Executive Vice Chairman  
T 310-407-6585  
jay.luchs@nmrk.com  
CA RE Lic. #01260345  
**JAYLUCHS.COM**

**GENNY CHANG**  
Managing Director  
T 310-407-6588  
genny.chang@nmrk.com  
CA RE Lic. #01467375

 **CUSHMAN & WAKEFIELD**

**KAZUKO Y. MORGAN**  
Executive Vice Chairman  
T 415-773-3546  
kazuko.morgan@cushwake.com  
CA RE Lic. #01070005

**CARINE MAMANN**  
Executive Managing Director  
T 310-595-2235  
carine.mamann@cushwake.com  
CA RE Lic. #01734150



## ADDRESS

22333 Pacific Coast Highway,  
Suite 240 & 245  
Malibu, CA 90265

## USE

2nd Floor Retail

## SIZE

Suite 240: ±579 SF

Suite 245: ±538 SF

Can be combined for a total of  
**±1,117 SF**

## RENT

Available upon Request

## PARKING

Ample on-site parking available

## HIGHLIGHTS

- Great views of Pacific Coast Hwy
- Signage opportunity along Pacific Coast Hwy
- Staircase and elevator access



**NEWMARK**  
PACIFIC

**JAY LUCHS**  
Executive Vice Chairman  
T 310-407-6585  
jay.luchs@nmrk.com  
CA RE Lic. #01260345  
**JAYLUCHS.COM**

**GENNY CHANG**  
Managing Director  
T 310-407-6588  
genny.chang@nmrk.com  
CA RE Lic. #01467375

**CUSHMAN & WAKEFIELD**

**KAZUKO Y. MORGAN**  
Executive Vice Chairman  
T 415-773-3546  
kazuko.morgan@cushwake.com  
CA RE Lic. #01070005

**CARINE MAMANN**  
Executive Managing Director  
T 310-595-2235  
carine.mamann@cushwake.com  
CA RE Lic. #01734150



## SUITE 240 & 245 | 2ND FLOOR PHOTOS



**NEWMARK**  
PACIFIC

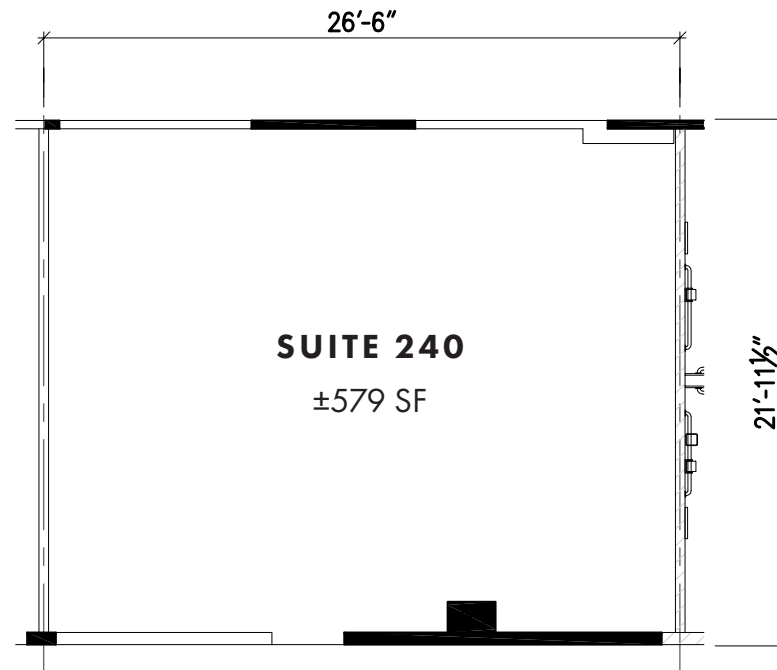
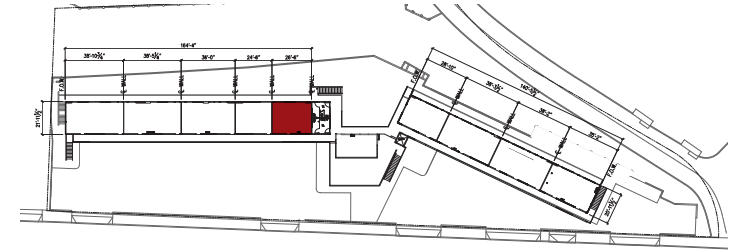
**JAY LUCHS**  
Executive Vice Chairman  
T 310-407-6585  
jay.luchs@nmrk.com  
CA RE Lic. #01260345  
**JAYLUCHS.COM**

**GENNY CHANG**  
Managing Director  
T 310-407-6588  
genny.chang@nmrk.com  
CA RE Lic. #01467375

**CUSHMAN & WAKEFIELD**

**KAZUKO Y. MORGAN**  
Executive Vice Chairman  
T 415-773-3546  
kazuko.morgan@cushwake.com  
CA RE Lic. #01070005

**CARINE MAMANN**  
Executive Managing Director  
T 310-595-2235  
carine.mamann@cushwake.com  
CA RE Lic. #01734150



\*Can be combined with Suite 245 for a total of: **±1,117 SF**

**NEWMARK**  
PACIFIC

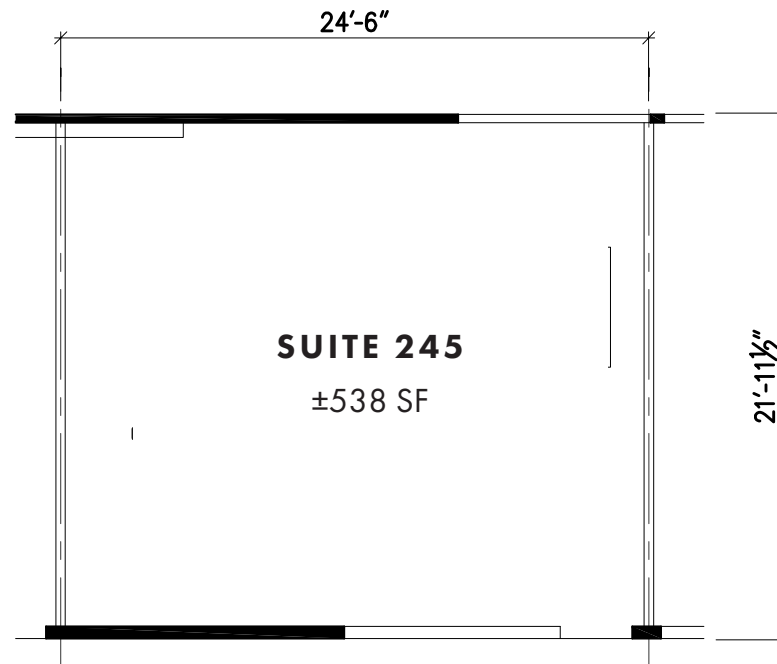
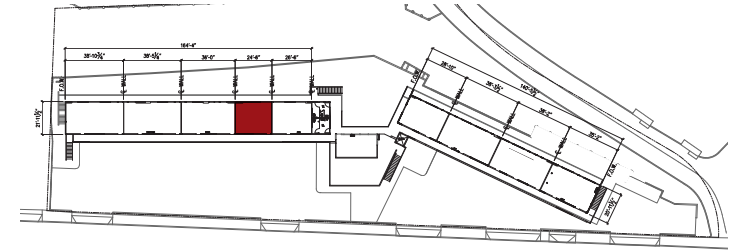
**JAY LUCHS**  
Executive Vice Chairman  
T 310-407-6585  
jay.luchs@nmrk.com  
CA RE Lic. #01260345  
**JAYLUCHS.COM**

**GENNY CHANG**  
Managing Director  
T 310-407-6588  
genny.chang@nmrk.com  
CA RE Lic. #01467375

 **CUSHMAN & WAKEFIELD**

**KAZUKO Y. MORGAN**  
Executive Vice Chairman  
T 415-773-3546  
kazuko.morgan@cushwake.com  
CA RE Lic. #01070005

**CARINE MAMANN**  
Executive Managing Director  
T 310-595-2235  
carine.mamann@cushwake.com  
CA RE Lic. #01734150



\*Can be combined with Suite 240 for a total of: **±1,117 SF**

**NEWMARK**  
PACIFIC

**JAY LUCHS**  
Executive Vice Chairman  
T 310-407-6585  
jay.luchs@nmrk.com  
CA RE Lic. #01260345  
**JAYLUCHS.COM**

**GENNY CHANG**  
Managing Director  
T 310-407-6588  
genny.chang@nmrk.com  
CA RE Lic. #01467375

 **CUSHMAN &  
WAKEFIELD**

**KAZUKO Y. MORGAN**  
Executive Vice Chairman  
T 415-773-3546  
kazuko.morgan@cushwake.com  
CA RE Lic. #01070005

**CARINE MAMANN**  
Executive Managing Director  
T 310-595-2235  
carine.mamann@cushwake.com  
CA RE Lic. #01734150





**NEWMARK**  
PACIFIC

**JAY LUCHS**  
Executive Vice Chairman  
T 310-407-6585  
jay.luchs@nmrk.com  
CA RE Lic. #01260345  
**JAYLUCHS.COM**

**GENNY CHANG**  
Managing Director  
T 310-407-6588  
genny.chang@nmrk.com  
CA RE Lic. #01467375

**CUSHMAN & WAKEFIELD**

**KAZUKO Y. MORGAN**  
Executive Vice Chairman  
T 415-773-3546  
kazuko.morgan@cushwake.com  
CA RE Lic. #01070005

**CARINE MAMANN**  
Executive Managing Director  
T 310-595-2235  
carine.mamann@cushwake.com  
CA RE Lic. #01734150



# MALIBU SANDS CENTER

22333 PACIFIC COAST HIGHWAY | MALIBU, CALIFORNIA



The information contained herein has been obtained from sources deemed reliable but has not been verified and no guarantee, warranty or representation, either express or implied, is made with respect to such information. Terms of sale or lease and availability are subject to change or withdrawal without notice.

**NEWMARK**  
PACIFIC

Corporate RE Lic. #01796698

**JAY LUCHS**

Executive Vice Chairman  
T 310-407-6585  
jay.luchs@nmrk.com  
CA RE Lic. #01260345  
**JAYLUCHS.COM**

**GENNY CHANG**

Managing Director  
T 310-407-6588  
genny.chang@nmrk.com  
CA RE Lic. #01467375



**CUSHMAN &  
WAKEFIELD**

**KAZUKO Y. MORGAN**

Executive Vice Chairman  
T 415-773-3546  
kazuko.morgan@cushwake.com  
CA RE Lic. #01070005

**CARINE MAMANN**

Executive Managing Director  
T 310-595-2235  
carine.mamann@cushwake.com  
CA RE Lic. #01734150