

# MOORPARK MARKETPLACE

MOORPARK, CALIFORNIA



**JAY LUCHS**  
**GAVIN KETCHUM**  
**NEWMARK**

Vice Chairman  
Director  
**JAYLUCHS.COM**

310-407-6585  
310-407-6593

[jay.luchs@nrmk.com](mailto:jay.luchs@nrmk.com)  
[gavin.ketchum@nrmk.com](mailto:gavin.ketchum@nrmk.com)

CA RE Lic. #01260345  
CA RE Lic. #01929170

jayluchs.com  
**For Lease**  
**310 407 6585**  
**Jay Luchs**  
Los Angeles



### ADDRESS

Suite 888-D

### USE

Restaurant

### SIZE

±2,748 SF

### AVAILABLE

Immediately

### RENT

Available upon Request

### PARKING

Four spaces available

### HIGHLIGHTS

- Restaurant in recently remodeled courtyard
- Full kitchen with multiple hoods, exhaust shafts and grease line
- Neighboring tenants include Wingstop, Jimmy John's, It's Boba Time and more

**JAY LUCHS**  
**GAVIN KETCHUM**  
**NEWMARK**

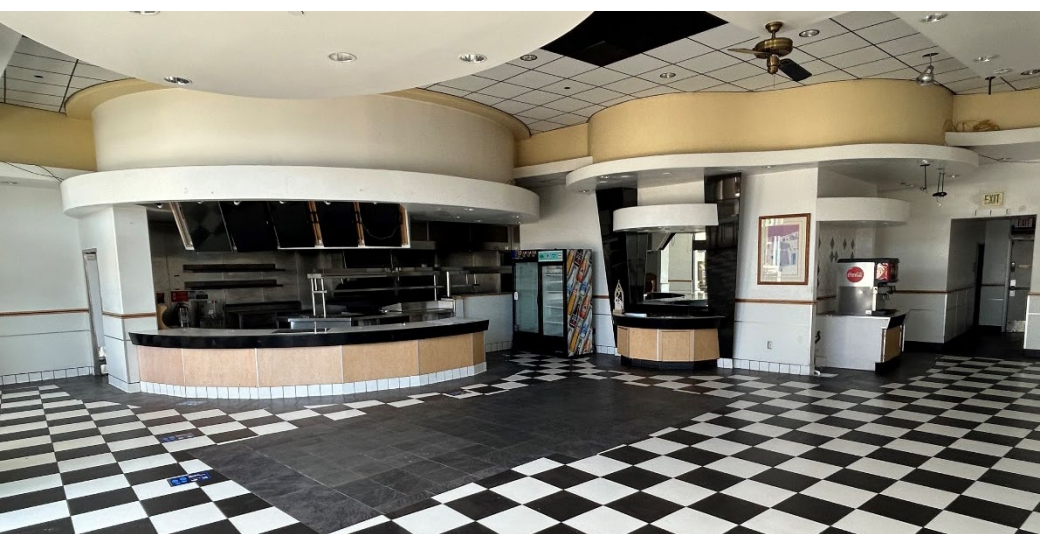
Vice Chairman  
Director  
**JAYLUCHS.COM**

310-407-6585  
310-407-6593

[jay.luchs@nrmk.com](mailto:jay.luchs@nrmk.com)  
[gavin.ketchum@nrmk.com](mailto:gavin.ketchum@nrmk.com)

CA RE Lic. #01260345  
CA RE Lic. #01929170

jayluchs.com  
**For Lease**  
**310 407 6585**  
**Jay Luchs**  
Los Angeles



**JAY LUCHS**  
**GAVIN KETCHUM**  
**NEWMARK**

Vice Chairman  
Director  
**JAYLUCHS.COM**

310-407-6585  
310-407-6593

[jay.luchs@nrmk.com](mailto:jay.luchs@nrmk.com)  
[gavin.ketchum@nrmk.com](mailto:gavin.ketchum@nrmk.com)

CA RE Lic. #01260345  
CA RE Lic. #01929170

jayluchs.com  
**For Lease**  
**310 407 6585**  
**Jay Luchs**  
Los Angeles

# MOORPARK MARKETPLACE

Chipotle Mexican Grill, Denny's, Famous Footwear, In-N-Out Burger, Jamba, Jimmy John's, Kohl's, Michaels, Panda Express, Smart & Final, Starbucks, Target, TJ Maxx, Wingstop and more



±31,299  
CARS PER DAY

Tierra Rejada Golf Club

Miller Park

## THE VILLAGE AT MOORPARK

Amazon Fresh, Bank of America, CJ's Urban Café, Lucky Strike, Luv' n Eat Thai Cuisine Moorpark, Verizon and more

Traffic Count: TrafficMetrix, Costar 2022

**JAY LUCHS**  
**GAVIN KETCHUM**  
**NEWMARK**

Vice Chairman  
Director  
**JAYLUCHS.COM**

310-407-6585  
310-407-6593

jay.luchs@nrmk.com  
gavin.ketchum@nrmk.com

CA RE Lic. #01260345  
CA RE Lic. #01929170

jayluchs.com  
**For Lease**  
**310 407 6585**  
**Jay Luchs**  
Los Angeles



The information contained herein has been obtained from sources deemed reliable but has not been verified and no guarantee, warranty or representation, either express or implied, is made with respect to such information. Terms of sale or lease and availability are subject to change or withdrawal without notice.

**Corporate RE Lic #01355491**

**JAY LUCHS**  
**GAVIN KETCHUM**  
**NEWMARK**

Vice Chairman  
Director  
**JAYLUCHS.COM**

310-407-6585  
310-407-6593

[jay.luchs@nrmk.com](mailto:jay.luchs@nrmk.com)  
[gavin.ketchum@nrmk.com](mailto:gavin.ketchum@nrmk.com)

CA RE Lic. #01260345  
CA RE Lic. #01929170

jayluchs.com  
**For Lease**  
**310 407 6585**  
**Jay Luchs**  
Los Angeles