



SHOPPES



WESTLAKE
VILLAGE

RESTAURANT / RETAIL / SERVICE OPPORTUNITY

NEWMARK

JAY LUCHS
Vice Chairman
T 310 407 6585
jay.luchs@nrmk.com
CA RE Lic. #01260345

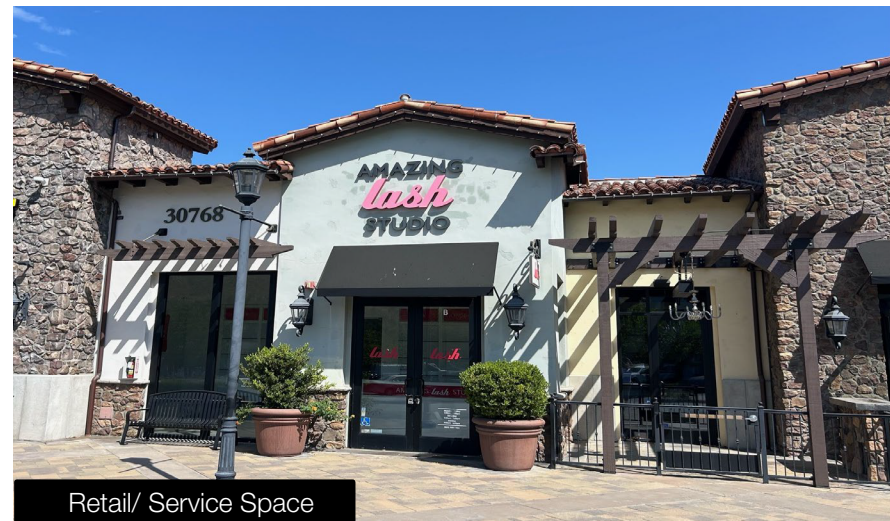
GAVIN KETCHUM
Director
T 310 407 6593
gavin.ketchum@nrmk.com
CA RE Lic. #01929170

PROPERTY INFORMATION

Asking Rate: Available Upon Request

Availability: Restaurant: ±3,259 SF + patio
Retail/ Service: ±1,724 SF

- A 240,000 SF Target-Anchored retail center
- Over 100,000 SF of upscale shops & dining
- In a beautiful outdoor environment
- On Russell Ranch Rd at the 101 Freeway/Lindero Canyon Rd Off-ramp
- Excellent freeway visibility, access & frontage
- Adjacent to one of the highest volume Costco in LA County
- Adjacent to the Four Seasons Hotel Westlake Village



PROPERTY IMAGES



jayluchs.com

JAY LUCHS
Vice Chairman
T 310 407 6585
jay.luchs@nmrk.com
CA RE Lic. #01260345

GAVIN KETCHUM
Director
T 310 407 6593
gavin.ketchum@nmrk.com
CA RE Lic. #01929170



PROPERTY IMAGES



jayluchs.com

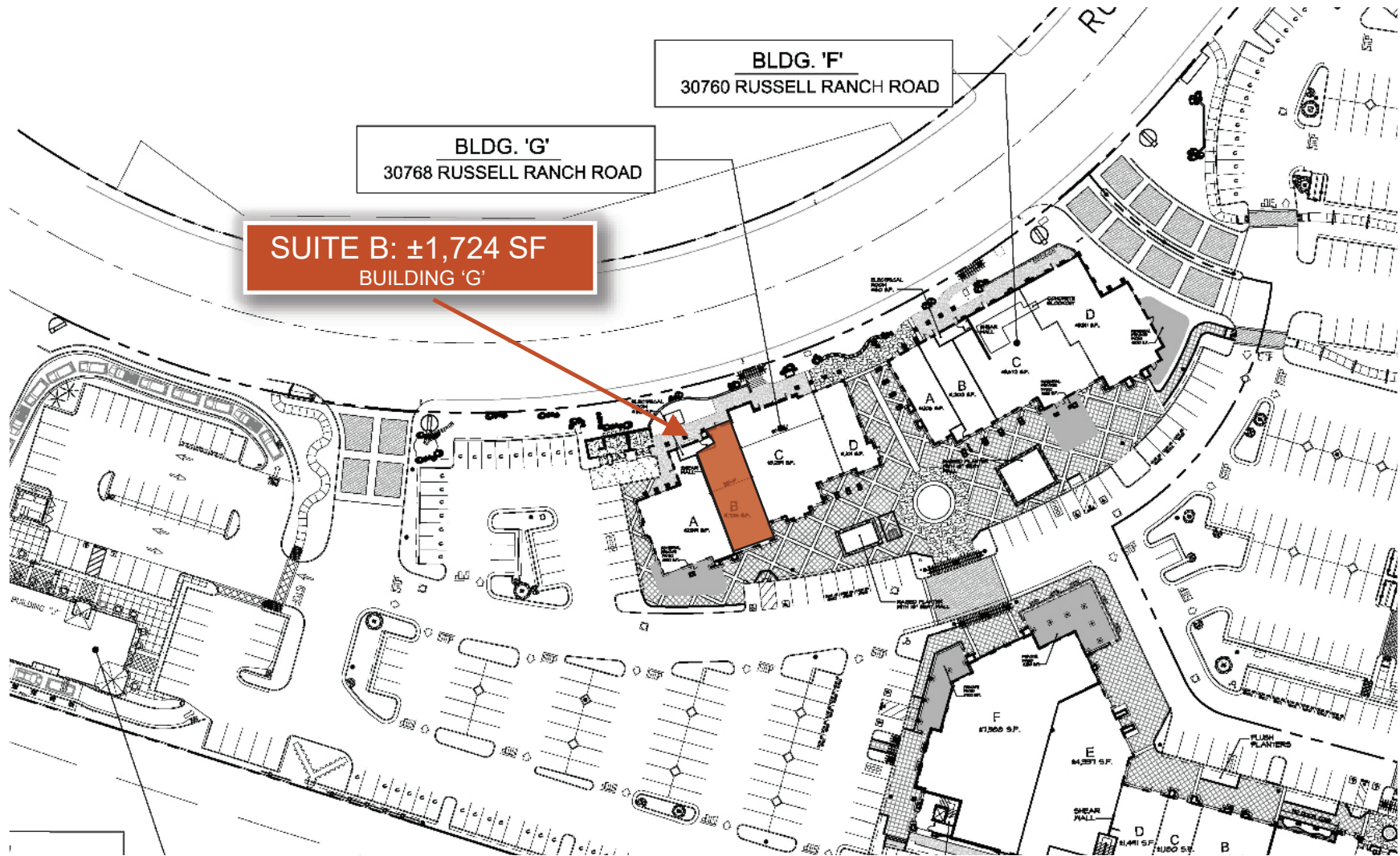
JAY LUCHS
Vice Chairman
T 310 407 6585
jay.luchs@nrmk.com
CA RE Lic. #01260345

GAVIN KETCHUM
Director
T 310 407 6593
gavin.ketchum@nrmk.com
CA RE Lic. #01929170

SITE PLAN



RETAIL/ SERVICE SITE PLAN



RETAIL SERVICES EXPERTS

JAY LUCHS

Vice Chairman

T 310 407 6585

jay.luchs@nrmk.com

CA RE License #01260345

GAVIN KETCHUM

Director

T 310 407 6593

gavin.ketchum@nrmk.com

CA RE License #01929170

jayluchs.com



NEWMARK

The information contained herein has been obtained from sources deemed reliable but has not been verified and no guarantee, warranty or representation, either express or implied, is made with respect to such information. Terms of sale or lease and availability are subject to change or withdrawal without notice.

Corporate License #01355491