



Westlake

COMMONS

WESTLAKE VILLAGE, CALIFORNIA



NEWMARK



TOWNSGATE ROAD

AGOURA ROAD

VILLAGE GLEN

Coca-Cola



Surrounded by the Santa Monica Mountains, Westlake Commons is bursting with vendors focused on a consumer trend that seems to be more permanent than passive; wellness. More consumers are practicing intentional living as they strive to eat healthy, remain active, and lower their impact on the environment.

Westlake Commons is the premiere communal space for those who seek a higher quality of life, where healthy living is the norm. Expect spectacular, fresh food, retailers who focus on outdoor sports, fitness, and overall wellness.

Westlake Commons is the place to

EAT SHOP THRIVE



JAY LUCHS

VICE CHAIRMAN

310-407-6585

JAY.LUCHS@NMRK.COM

CA RE LIC. #01260345

JAYLUCHS.COM

GAVIN KETCHUM

DIRECTOR

310-407-6593

GAVIN.KETCHUM@NMRK.COM

CA RE LIC. #01929170

NEWMARK



SHOPPING Corridor

Westlake Commons serves the most affluent pocket of Westlake Village, situated just south of the 101.



JAY LUCHS	VICE CHAIRMAN	310-407-6585	JAY.LUCHS@NMRK.COM	CA RE LIC. #01260345	JAYLUCHS.COM
GAVIN KETCHUM	DIRECTOR	310-407-6593	GAVIN.KETCHUM@NMRK.COM	CA RE LIC. #01929170	NEWMARK



100



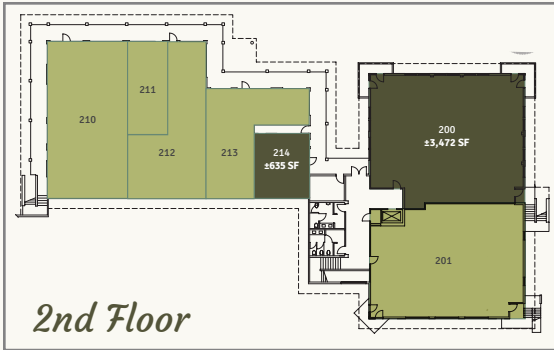
2797



2803



2823



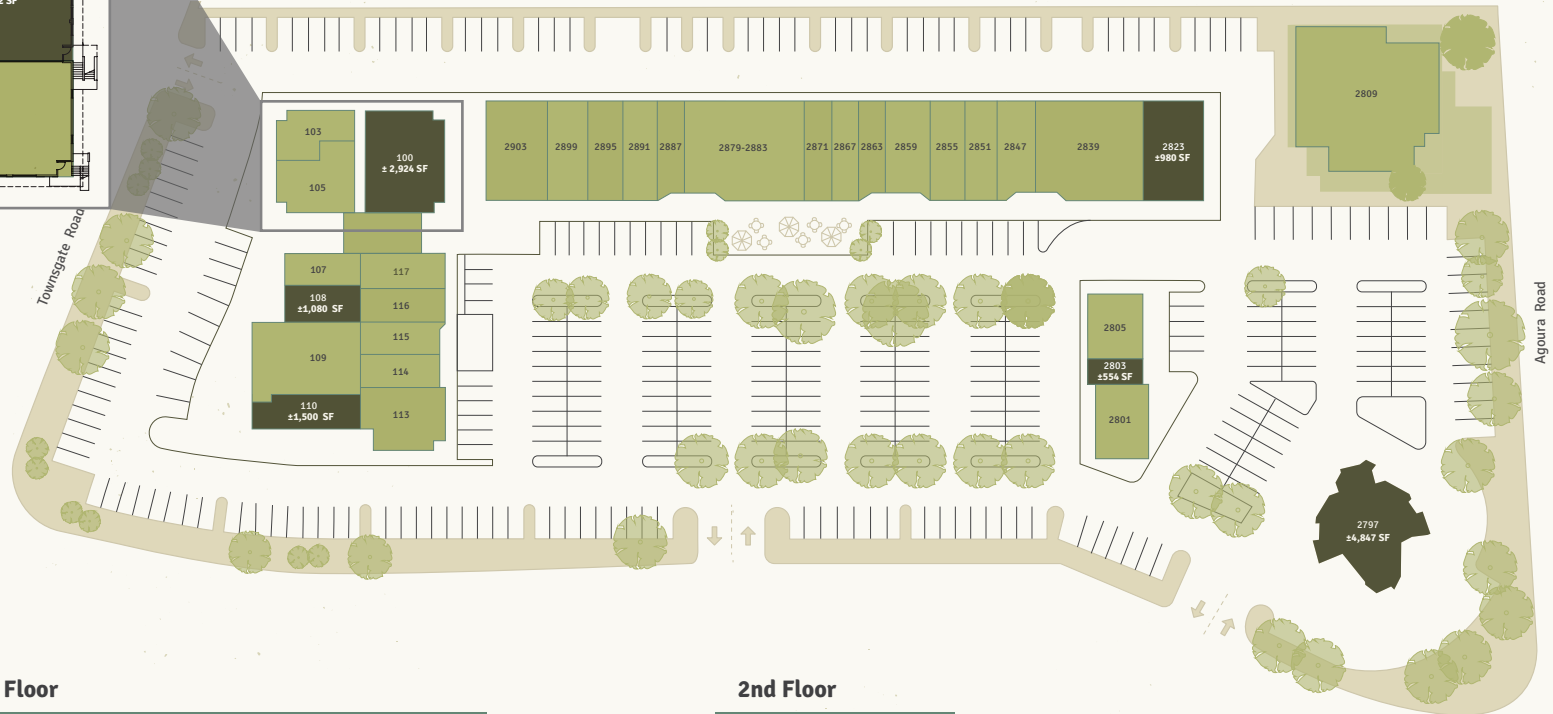
2nd Floor

Available Retail

Rate

Ground Floor
\$5.00/SF per month NNN

2nd Floor
\$2.15/SF per month MG



Ground Floor

100	±2,924 SF	2797	±4,847 SF
108	±1,080 SF	2803	±554 SF
110	±1,500 SF	2823	±980 SF

2nd Floor

200	±3,472 SF
214	±635 SF

JAY LUCHS

VICE CHAIRMAN

310-407-6585

JAY.LUCHS@NMRK.COM

CA RE LIC. #01260345

JAYLUCHS.COM

GAVIN KETCHUM

DIRECTOR

310-407-6593

GAVIN.KETCHUM@NMRK.COM

CA RE LIC. #01929170

NEWMARK

Westlake COMMONS SITE PLAN

← North



Latest Additions

🌿 New and Expanding Tenants

- Burt's Good Neighborhood Rx
- The Hub Bike Shop
- Garman's Fine Vintage Wear
- Julio's Agave Grill
- Joi Café

Inquire about lease opportunities

Restaurants, Retail & Wellness Businesses

COMMUNITY

100:	Available
103:	Leased
105:	Burt's Good Neighborhood Rx 🌿
107:	Leased
108:	Available
109:	The Hub Bike Shop 🌿
110:	Available
113:	Taco Bell
114:	Leased
115:	Jessica's Alterations
116:	Bunda
117:	Leased
200:	Available
201:	Westlake Eye Surgery
210:	Massage Heights
211:	Kevin Boyles
212:	Leased
213:	Leased
214:	Available
2797:	Available
2801:	Popeye's
2803:	Available
2805:	Leased
2809:	Zinque
2823:	Available
2839:	Regency Salon
2847:	Juice Bar
2851:	Westlake Florist
2855-2859:	Joi Café 🌿
2863:	TD Nail Salon
2867:	Dr. Henteloff Optometry
2871:	European Wax
2879-2883:	Leased
2891:	Moody Rooster
2895:	Soto Lifestyle
2899:	Soto
2903:	Tennis Shop

JAY LUCHS

VICE CHAIRMAN

310-407-6585

JAY.LUCHS@NMRK.COM

CA RE LIC. #01260345

JAYLUCHS.COM

GAVIN KETCHUM

DIRECTOR

310-407-6593

GAVIN.KETCHUM@NMRK.COM

CA RE LIC. #01929170

NEWMARK



The information contained herein has been obtained from sources deemed reliable but has not been verified and no guarantee, warranty or representation, either express or implied, is made with respect to such information. Terms of sale or lease and availability are subject to change or withdrawal without notice.

Corporate RE License #01355491

JAY LUCHS

VICE CHAIRMAN

310-407-6585

JAY.LUCHS@NMRK.COM

CA RE LIC. #01260345

JAYLUCHS.COM

GAVIN KETCHUM

DIRECTOR

310-407-6593

GAVIN.KETCHUM@NMRK.COM

CA RE LIC. #01929170

NEWMARK